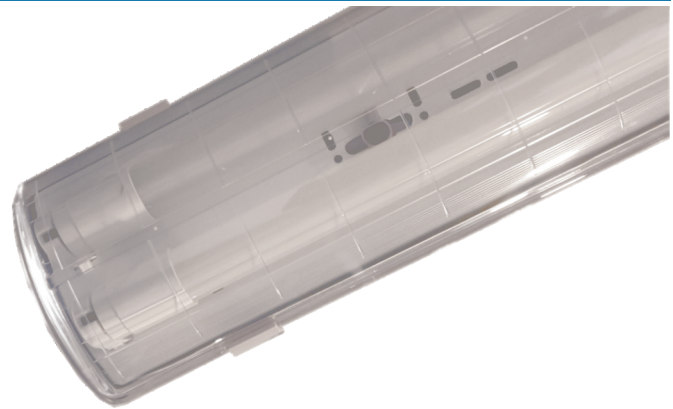


OPRAWA SZCZELNA LUMIA PROOF TLN LED

CHARAKTERYSTYKA / FEATURES

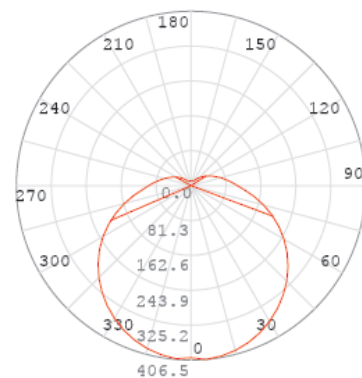
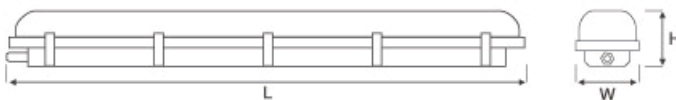
- Przezroczysty klosz
- Wymienne tuby LED



- Non-discoloring transparent diffuser
- Replaceable LED tubes

KRZYWA ROZSYŁU / PHOTOMETRICS DISTRIBUTION

WYMIARY / DIMENSIONS



DANE TECHNICZNE / SPECIFICATIONS

Model	Input Volt.	Power LED Tubes	Fixture Power	Ambient Temp.	Lifespan	Fixture Dim.	Colour Temp.	Luminous Flux LED Tubes
	Napięcie (V)	Moc Tub LED (W)	Moc Oprawy (W)	Temper. Otoczenia (C)	Czas Pracy (H)	Wymiary L x W x H (mm)	Temperatura Barw (K)	Strumień Świetlny Tub LED (lm)
F27-6972	176-264	2x9	20	-20..+40	25 000	657x120x88	4000	1800
F27-6973	176-264	2x18	40	-20..+40	25 000	1263x120x88		3600