

739 92

1. GENERAL CHARACTERISTICS

"F" female - "F" female adaptor used to connect two cables or coaxial leads fitted with a male "F" plug

Can also be used, for distribution in an apartment block, to establish the interface point required for the potential connection of a cable network

2. TECHNICAL CHARACTERISTICS

Operating frequency: 5-2150 Mhz

Connectivity attenuation ≤ 0.5 db

Possible to connect satellite control signals for channel switching (power pass)

Characteristic impedance 75Ω


Steel body with nickel coating

Weight ≤ 5 g

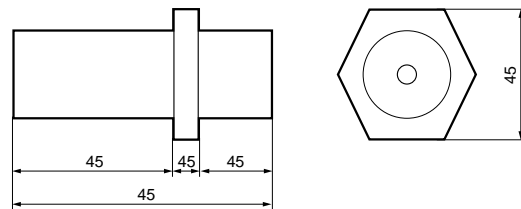
3. CONNECTION


With crimp-type or screw-type "F" plugs Cat. Nos. 739 90/95

4. INSTALLATION RECOMMENDATIONS

 To increase the service life of connections in highly corrosive areas (seaside, etc), spray the surface of the screw thread with a film of silicon

5. DIMENSIONS



 For use as an interface point, this connector must be labelled. The following information should be included:

- Interface point
- Number of sockets served
- Input level (< 103 dB)
- Manufacturing date
- Installer's identification

The adaptor should be located at the foot of a building, at the level of the refuse and miscellaneous service points

6. APPROVAL

CE