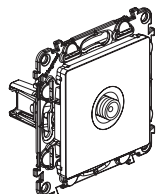
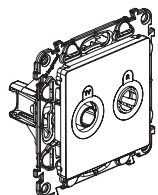


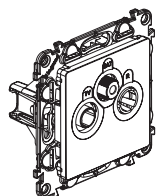
7 531 51 / 60 / 61,
7 532 51 / 60 / 61,
7 533 51 / 60 / 61,
7 556 49 / 50 / 51 / 52 / 53 / 54 / 55 / 56 / 57



7 556 58 / 59 / 60
7 563 51



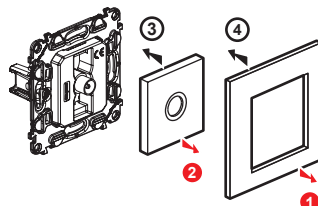
7 556 61 / 62 / 63 / 64 / 65 / 66



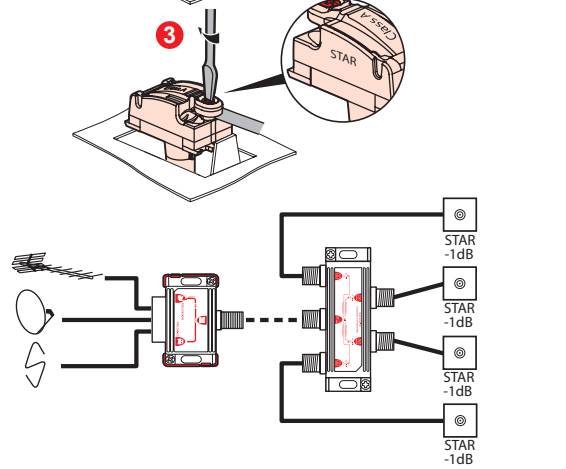
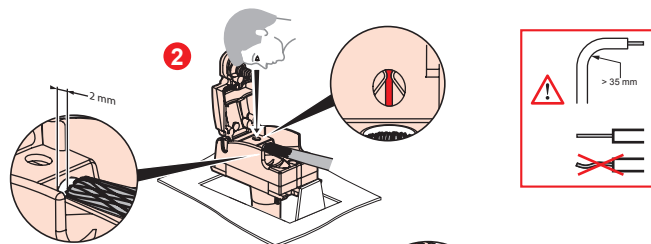
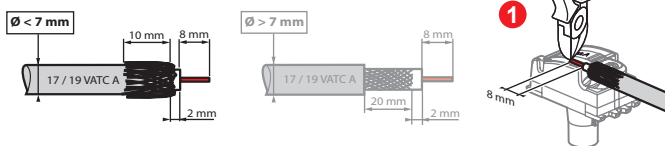
7 531 52 / 58 / 64 / 65,
7 532 52 / 58 / 64 / 65,
7 533 52 / 58 / 64 / 65,
7 556 67 / 68 / 69 / 70 / 71 / 72 / 73 / 74 / 75
7 563 52 / 64 / 65

- ES** **Consignas de seguridad**
El no cumplimiento estricto de las instrucciones de instalación y uso puede implicar riesgos de choque eléctrico o incendio.
- PT** **Instruções de segurança**
Não respeitar estritamente as condições de instalação e de utilização poderá provocar riscos de choque eléctrico ou de incêndio.
- DE** **Sicherheitshinweise**
Bei Nichtbeachtung der Einbaubund Nutzungsvorschriften besteht Stromschlag- bzw. Brandgefahr.
- GB-CY** **Συστάσεις ασφαλείας**
Η μη αυστηρή τήρηση των συνθηκών εγκατάστασης και χρήσης μπορεί να επιφέρει κινδύνους ηλεκτροπληξίας ή πυρκαγιάς.
- PL** **Przepisy bezpieczeństwa**
Niezastosowanie się ściśle do warunków instalacji i użytkowania może grozić porażeniem prądem lub pożarem.
- CZ** **Bezpečnostní pokyny**
Nedodržení stanovených podmínek instalace a používání může vést k riziku zasažení elektrickým proudem nebo požárem.
- SK** **Bezpečnostní nariadenia**
V prípade nedodržania presných podmienok týkajúcich sa inštalácie a používania hrozí riziko úrazu elektrickým prúdom alebo vzniku požiaru.
- HU** **Biztonsági előírások**
A beszerelési és használati feltételek szigorú betartásának elmulasztása arámütés vagy tűz kockázatával jár.
- RO** **Instrucțiuni de siguranță**
Nerespectarea strictă a condițiilor de instalare și utilizare poate genera riscuri de șocuri electrice sau incendiu.
- SI** **Varnostna navodila**
Neupoštevanje vseh pogojev instalacije in uporabe lahko povzroči nevarnost električnega udara ali požara.
- HR** **Šigurnosne napomene**
Ako se ne pridržavate strogo uvjeta za instalaciju i uporabu, može doći do strujnog udara ili požara.
- BG** **Указания за безопасност**
Неспазването стриктно на указанията за сглобяване и използване може да доведе до риск от токов удар или пожар.
- RS** **Šigurnosne preporuke**
Ukoliko se ne pridržavate striktno uslova instaliranja i korišćenja, može doći do strujnog udara ili požara.
- FR-LU-BE-CH** **Consignes de sécurité**
Ne pas respecter strictement les conditions d'installation et d'utilisation peut entraîner des risques de choc électrique ou d'incendie.
- NL-BE** **Veiligheidsvoorschriften**
Door de installatie- en gebruiksvoorwaarden niet strikt na te leven, kan er gevaar voor elektrische schokken of brand ontstaan.
- GB-IE** **Safety instructions**
The instructions for installation and use must be strictly observed in order to avoid the risk of electric shock or fire.

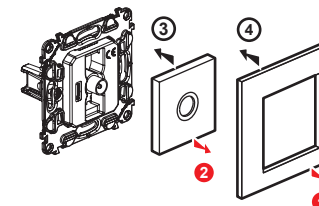
7 531 51, 7 532 51, 7 533 51,
7 556 49 / 50 / 51 / 58 / 59 / 60, 7 563 51



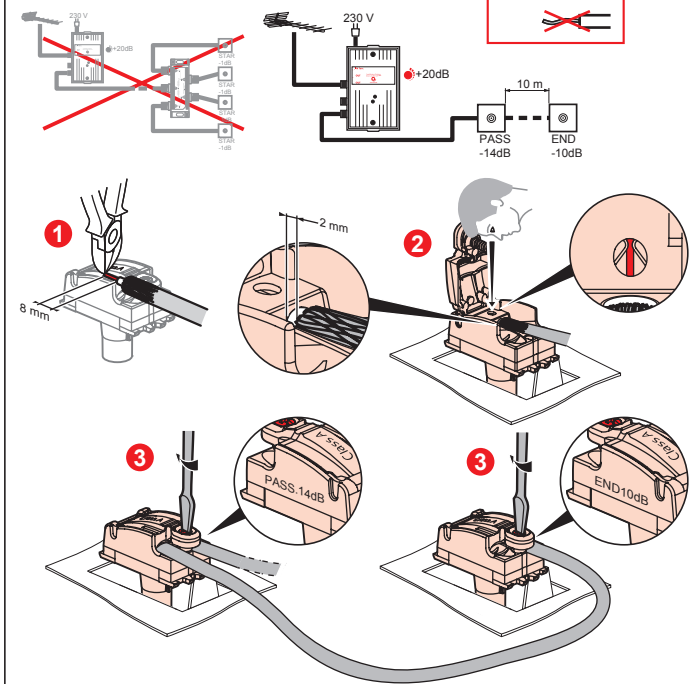
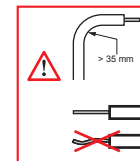
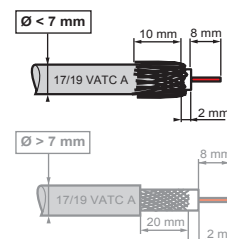
Z	Control	Return Path	Channel 1	Channel FM	Channel VHF	Channel UHF	Channel SAT (IF)
75 Ω	< 1,5 dB 500 mA	22 kHz 0,6 V	4 - 30 MHz	47 - 68 MHz	87,5 - 108 MHz	120 - 470 MHz	470 - 862 MHz 950 - 2400 MHz



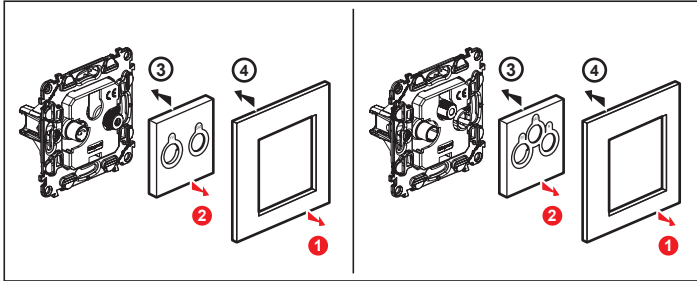
7 531 60 / 61, 7 532 60 / 61, 7 533 60 / 61,
7 556 52 / 53 / 54 / 55 / 56 / 57



Z	Control	Return Path	Channel 1	Channel FM	Channel VHF	Channel UHF	Channel SAT (IF)
75 Ω	10 dB 500 mA	22 kHz 0,6 V	4 - 30 MHz	47 - 68 MHz	87,5 - 108 MHz	120 - 470 MHz	470 - 862 MHz 950 - 2150 MHz



7 531 52 / 58 / 64 / 65, 7 532 52 / 58 / 64 / 65, 7 533 52 / 58 / 64 / 65,
 7 556 61 / 62 / 63 / 64 / 65 / 66 / 67 / 68 / 69 / 70 / 71 / 72 / 73 / 74 / 75, 7 563 52 / 64 / 65



Z	Control	Return Path	Channel 1	Channel FM	Channel VHF	Channel UHF	Channel SAT (IF)	
75 Ω	500 mA	22 kHz 0,6 V	4 - 30 MHz	47 - 68 MHz	87,5 - 108 MHz	120 - 470 MHz	470 - 862 MHz	950 - 2400 MHz
7 531 58, 7 532 58, 7 533 58	1,5 dB			1,5 dB				2 dB
7 556 61 / 62 / 63	—					10 dB		—
7 556 64 / 65 / 66	—					14 dB		—
7 531 64, 7 532 64, 7 533 64 7 556 70 / 71 / 72 7 563 64	1,5 dB					10 dB		
7 531 65, 7 532 65, 7 533 65, 7 556 73 / 74 / 75 7 563 65	1,5 dB					14 dB		

Z	Control	Return Path	Channel 1	Channel FM	Channel VHF	Channel UHF	Channel SAT (IF)	
75 Ω	500 mA	22 kHz 0,6 V	4 - 30 MHz	47 - 68 MHz	87,5 - 240 MHz	120 - 470 MHz	470 - 862 MHz	950 - 2400 MHz
7 531 52, 7 532 52, 7 533 52, 7 556 67 / 68 / 69 7 563 52	1,5 dB			1,5 dB				2 dB

TV-R-SAT	Control	Return Path	Channel 1	Channel FM	Channel VHF	Channel UHF	Channel SAT (IF)
7 531 52 7 532 52 7 533 52 7 556 67 / 68 / 69 7 563 52							
7 531 65 7 532 65 7 533 65 7 556 73 / 74 / 75 7 563 65	1,5 dB					14 dB	14 dB
7 531 64 7 532 64 7 533 64 7 556 70 / 71 / 72 7 563 64	1,5 dB					10 dB	10 dB
753158 753258 753358							

