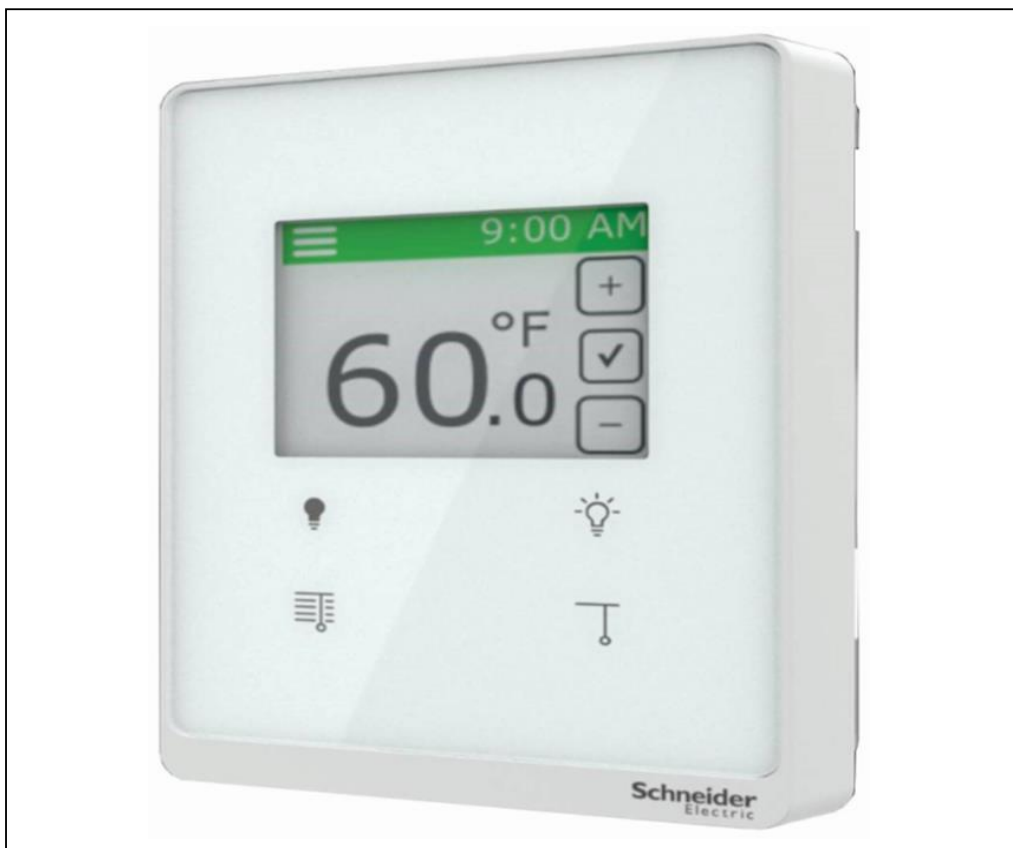
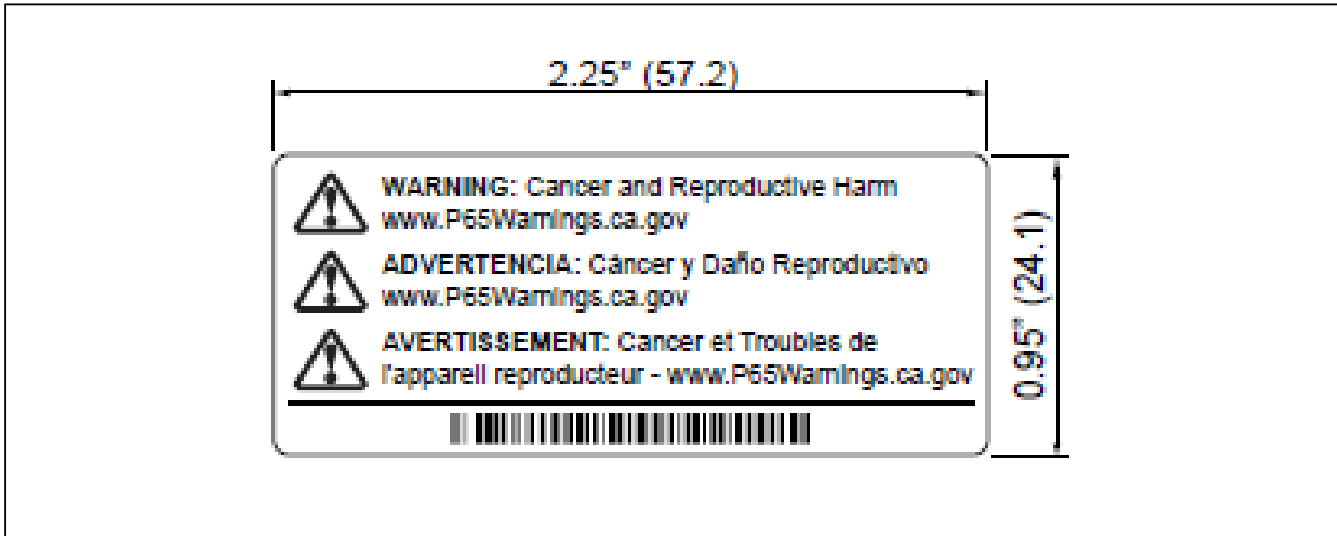


Product End of Life Instructions

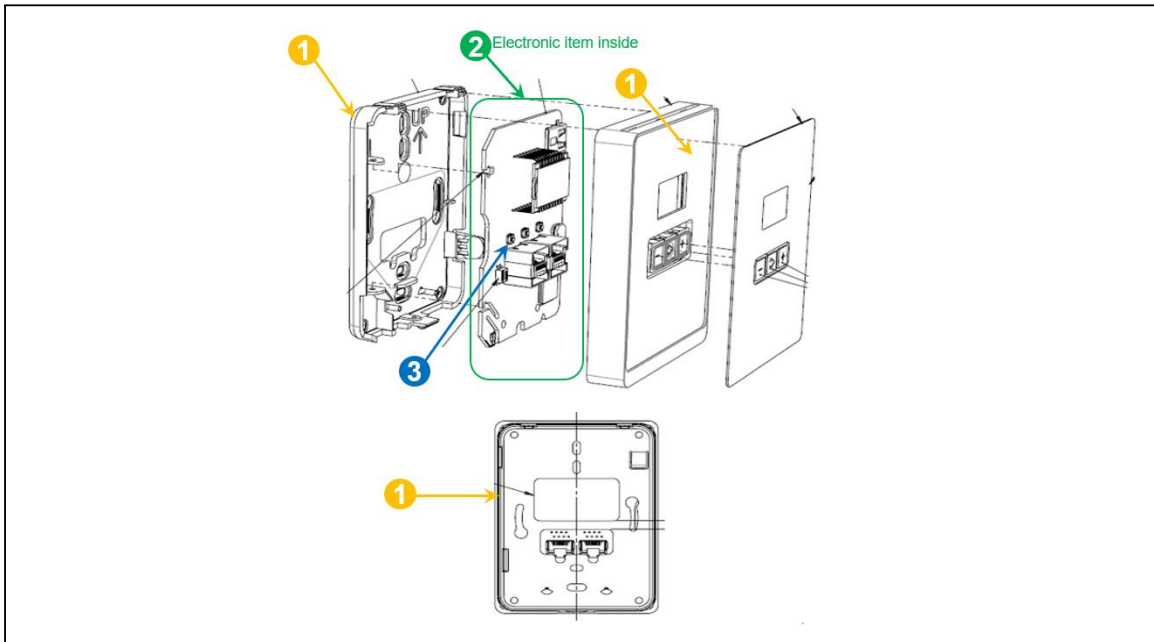
SMARTX CRS LIVING SPACE SENSORS



 **Potential disassembly risks**



 **End of Life Instructions**



Recommendation	Number on drawing	Component / Material	Weight (in g)	Comment
To be dismantled	1	Plastics	108	
To be dismantled	2	Electronic Board (Communication) > 10cm ²	8.4	
To be depolluted	3	Electronic Board (Communication) > 10cm ²	4	



Product description

Manufacturer identification	Schneider Electric Industries SAS
Brand name	Schneider Electric
Product function	The main function of the SmartX living space sensors is to measure the temperature of air in a living space. These sensors use an RJ-45 sensor bus that provides communication and power from the SmartX IP controller.
Product reference	SXWSC4PSELXW
Additional similar product references	SXWSC4PSELXW
Total representative product mass	121 g
Representative product dimensions	140 x 97 x 48
Date of information release	12/2019



Additional information

Legal information	This product family is in the scope of European Union directive 2012/19/EU on Waste Electrical and Electronic Equipment (WEEE). The product family must be disposed according to the legislation of the country. This document is intended for use by end of life recyclers or treatment facilities. It provides the basic information to assure an appropriate end of life treatment for the components and materials of the product.	
Recyclability potential	70%	Based on "ECO'DEEE recyclability and recoverability calculation method" (version V1, 20 Sep. 2008 presented to the French Agency for Environment and Energy Management: ADEME).

Schneider Electric Industries SAS
Country Customer Care Center
<http://www.schneider-electric.com/contact>
35, rue Joseph Monier
CS 30323
F- 92506 Rueil Malmaison Cedex
RCS Nanterre 954 503 439
Capital social 896 313 776 €

www.schneider-electric.com

ENVEOLI1912001_V1

Published by Schneider Electric

© 2019 - Schneider Electric – All rights reserved

12/2019