

VZ*08*

Dimensions

VZ208*-MZ140

VZ308*-MZ140

VZ*08-MZ140

Valve	Actuator	a	b	c	d	e	f	g ¹
VZ208*-15BP01 to -15BP05	MZ140	52	G1/2"A	22,5	27	15,6	65	7,5
VZ208*-20BP07		56	G3/4"A	23,6	25,8		9,5	
VZ208*-20BP08 / -20BP09							11	

Valve	Actuator	a	b	c	d	e	f	g ¹
VZ408*-15BP01 to -15BP05	MZ140	52	G1/2"A	40	27	15,6	88,4	7,5
VZ408*-20BP07		56	G3/4"A	50	25,8		98,4	9,5
VZ408*-20BP08 / -20BP09				44			11	

Valve	Actuator	a	b	c	d	e	f	g ¹
VZ308*-15BP01 to -15BP05	MZ140	52	G1/2"A	25	27	15,6	67,6	7,5
VZ308*-20BP07		56	G3/4"A	34	25,8		75,4	9,5
VZ308*-20BP08 / -20BP09							11	

Notes for VZ*08C valves:
The overall dimensions for V*08C models are without fittings mounted.

¹ g dimensions relevant only for compression models (VZ*08C).

1

1b

1c

2

3

4a

S/GB/F/D/ES
Med/With/Avec/Mit/Con
MZ140

4b

Utan/Without/Sans
Ohne/Sin MZ140

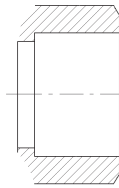
5

6

Pressure drop diagram

The diagram is a log-log plot of Pressure drop (kPa) on the y-axis (0.1 to 20) versus Flow rate (m³/h) on the x-axis (0.01 to 3). Diagonal lines represent constant Kv values: Kv 0,25, Kv 0,4, Kv 0,6, Kv 1, Kv 1,6, Kv 2,5, Kv 4, and Kv 6.

PART NUMBER ORDERING - EXTERNALLY THREADED VALVES



Two-way valves, VZ208E

Size	Connection	Kvs		External threads, Flat face sealing		Max. Close-off MZ140 actuator
		A-AB	B-AB	Part Number	Type Designation	
DN 15	G1/2A	0.25		VZ208E-15BP01	VZ208E-15BP 0.25E SU 00	250 kPa
		0.4		VZ208E-15BP02	VZ208E-15BP 0.4E SU 00	
		0.6		VZ208E-15BP03	VZ208E-15BP 0.6E SU 00	
		1		VZ208E-15BP04	VZ208E-15BP 1.0E SU 00	
		1.6		VZ208E-15BP05	VZ208E-15BP 1.6E SU 00	
DN20	G3/4A	2.5		VZ208E-20BP07	VZ208E-20BP 2.5E SU 00	150 kPa
		4		VZ208E-20BP08	VZ208E-20BP 4.0E SU 00	
		6		VZ208E-20BP09	VZ208E-20BP 6.0E SU 00	

Three-way valves, VZ308E

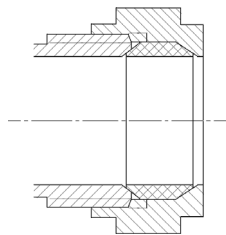
Size	Connection	Kvs		External threads, Flat face sealing		Max. Close-off MZ140 actuator
		A-AB	B-AB	Part Number	Type Designation	
DN 15	G1/2A	0.25	0.25	VZ308E-15BP01	VZ308E-15BP 0.25E SU 00	250 kPa
		0.4	0.25	VZ308E-15BP02	VZ308E-15BP 0.4E SU 00	
		0.6	0.4	VZ308E-15BP03	VZ308E-15BP 0.6E SU 00	
		1	0.6	VZ308E-15BP04	VZ308E-15BP 1.0E SU 00	
		1.6	1	VZ308E-15BP05	VZ308E-15BP 1.6E SU 00	
DN20	G3/4A	2.5	1.6	VZ308E-20BP07	VZ308E-20BP 2.5E SU 00	150 kPa
		4	2.5	VZ308E-20BP08	VZ308E-20BP 4.0E SU 00	100 kPa A-AB
		6	4	VZ308E-20BP09	VZ308E-20BP 6.0E SU 00	40 kPa B-AB

Three-way valves with integral by-pass (4 ports), VZ408E

Size	Connection	Kvs		External threads, Flat face sealing		Max. Close-off MZ140 actuator
		A-AB	B-AB	Part Number	Type Designation	
DN 15	G1/2A	0.25	0.25	VZ408E-15BP01	VZ408E-15BP 0.25E SU 00	250 kPa
		0.4	0.25	VZ408E-15BP02	VZ408E-15BP 0.4E SU 00	
		0.6	0.4	VZ408E-15BP03	VZ408E-15BP 0.6E SU 00	
		1	0.6	VZ408E-15BP04	VZ408E-15BP 1.0E SU 00	
		1.6	1	VZ408E-15BP05	VZ408E-15BP 1.6E SU 00	
DN20	G3/4A	2,5	1.6	VZ408E-20BP07	VZ408E-20BP 2.5E SU 00	150 kPa
		4	2.5	VZ408E-20BP08	VZ408E-20BP 4.0E SU 00	100 kPa A-AB
		6	4	VZ408E-20BP09	VZ408E-20BP 6.0E SU 00	40 kPa B-AB

Close-off = Max differential pressure allowed across the valve seat for reliable operation.

PART NUMBER ORDERING - COMPRESSION VALVES



Two-way valves VZ208C

Size	End Connection	Kvs		Single Pack - with nuts olives and adj. Caps		5 Multipacks - no nuts olives and adj. Caps		Max. Close-off
		A-AB	B-AB	Part Number	Type Designation	Part number	Type Designation	
DN 15	15 mm O/D	0.25		VZ208C-15BP01	VZ208C-15BP 0.25E SU 00	VZ208C-15BP51	VZ208C-15BP 0.25E SU M5	250 kPa
		0.4		VZ208C-15BP02	VZ208C-15BP 0.4E SU 00	VZ208C-15BP52	VZ208C-15BP 0.4E SU M5	
		0.6		VZ208C-15BP03	VZ208C-15BP 0.6E SU 00	VZ208C-15BP53	VZ208C-15BP 0.6E SU M5	
		1		VZ208C-15BP04	VZ208C-15BP 1.0E SU 00	VZ208C-15BP54	VZ208C-15BP 1.0E SU M5	
		1.6		VZ208C-15BP05	VZ208C-15BP 1.6E SU 00	VZ208C-15BP55	VZ208C-15BP 1.6E SU M5	
DN20	22 mm O/D	2.5		VZ208C-20BP07	VZ208C-20BP 2.5E SU 00	VZ208C-20BP57	VZ208C-20BP 2.5E SU M5	150 kPa

Three-way valves, VZ308C

Size	End Connection	Kvs		Single Pack - with nuts olives and adj. Caps		5 Multipacks - no nuts olives and adj. Caps		Max. Close-off
		A-AB	B-AB	Part Number	Type Designation	Part number	Type Designation	
DN 15	15 mm O/D	0.25	0.25	VZ308C-15BP01	VZ308C-15BP 0.25E SU 00	VZ308C-15BP51	VZ308C-15BP 0.25E SU M5	250 kPa
		0.4	0.25	VZ308C-15BP02	VZ308C-15BP 0.4E SU 00	VZ308C-15BP52	VZ308C-15BP 0.4E SU M5	
		0.6	0.4	VZ308C-15BP03	VZ308C-15BP 0.6E SU 00	VZ308C-15BP53	VZ308C-15BP 0.6E SU M5	
		1	0.6	VZ308C-15BP04	VZ308C-15BP 1.0E SU 00	VZ308C-15BP54	VZ308C-15BP 1.0E SU M5	
		1.6	1	VZ308C-15BP05	VZ308C-15BP 1.6E SU 00	VZ308C-15BP55	VZ308C-15BP 1.6E SU M5	
DN20	22 mm O/D	2.5	1.6	VZ308C-20BP07	VZ308C-20BP 2.5E SU 00	VZ308C-20BP57	VZ308C-20BP 2.5E SU M5	150 kPa

Three-way valves with integral by-pass (4 ports), VZ408C

Size	End Connection	Kvs		Single Pack - with nuts olives and adj. Caps		5 Multipacks - no nuts olives and adj. Caps		Max. Close-off
		A-AB	B-AB	Part Number	Type Designation	Part Number	Type Designation	
DN 15	15 mm O/D	0.25	0.25	VZ408C-15BP01	VZ408C-15BP 0.25E SU 00	VZ408C-15BP51	VZ408C-15BP 0.25E SU M5	250 kPa
		0.4	0.25	VZ408C-15BP02	VZ408C-15BP 0.4E SU 00	VZ408C-15BP52	VZ408C-15BP 0.4E SU M5	
		0.6	0.4	VZ408C-15BP03	VZ408C-15BP 0.6E SU 00	VZ408C-15BP53	VZ408C-15BP 0.6E SU M5	
		1	0.6	VZ408C-15BP04	VZ408C-15BP 1.0E SU 00	VZ408C-15BP54	VZ408C-15BP 1.0E SU M5	
		1.6	1	VZ408C-15BP05	VZ408C-15BP 1.6E SU 00	VZ408C-15BP55	VZ408C-15BP 1.6E SU M5	
DN20	22 mm O/D	2.5	1.6	VZ408C-20BP07	VZ408C-20BP 2.5E SU 00	VZ408C-20BP57	VZ408C-20BP 2.5E SU M5	150 kPa

Close-off = Max differential pressure allowed across the valve seat for reliable operation.