

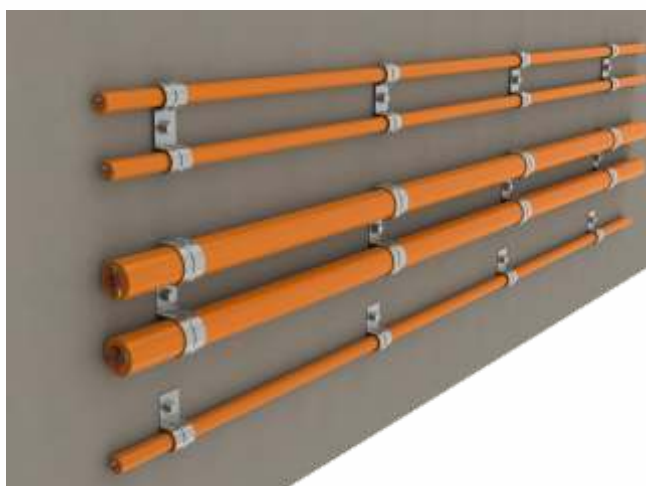
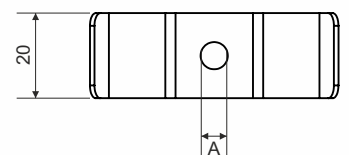
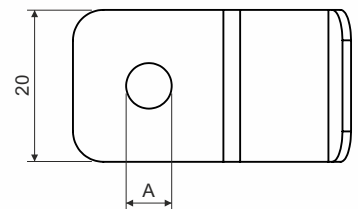
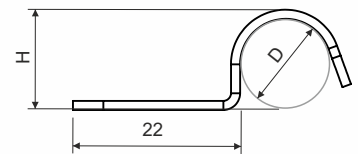
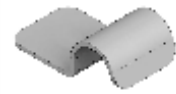
product description: Cable clamps are used to fasten cables directly to the base material to create cable trays with maintained functionality during fires.
 The maximum spacing of cable clamps for standardized trays is max. 300 mm, max. 600 mm is for non-standardized trays
 Clamps are fixed to the base material using SB 6.3X35, SB 6.3X45 concrete bolts or KPO 6x70_PO anchors.
 Clamps without hole can be shot using nail gun, magnetic head and nail.
 Two 6706-6725 clamps may be placed under one screw and in this way a line for two cables is created.

surface finish: PO - Pre-Galvanized, zinc-layer 15 - 27 µm
 POGMT - non electrolytic plating, aluminum-zinc-layer 5-15 µm (equivalent Hot Dip Galvanized)
 POBD - cable clamps without hole

sales amount: á 100 pc

classification: ČSN 73 0895 P 90-R
 DIN 4102-12 E 90
 STN 92 0205 PS 90
 Fire classification is depend on the specific conditions of the cable tray, detailed in the catalog Systems with maintained functionality in fire.

storage: EN 60721-3-1



item number	D (mm)	H (mm)	A (mm)	cable Ø (mm)	thickness of metal sheet (mm)
single-sided clamps					
6706_PO	6	7,2	6	4	1,2
6708_PO	8	9,2	6	6	1,2
6710_PO	10	11,2	6	8	1,2
6712_PO	12	13,2	6	10	1,2
6714_PO	14	15,2	6	12	1,2
6716E_PO	16	17,5	6	14	1,5
6718_PO	18	19,5	6	16	1,5
6720_PO	20	21,5	6	18	1,5
6722_PO	22	23,5	6	20	1,5
6725_PO	25	26,5	6	23	1,5
double-sided clamps					
6708D_PO	8	9	6	6	1
6710D_PO	10	11	6	8	1
6712D_PO	12	13,2	6	10	1,2
6716ED_PO	16	17,2	6	14	1
single-sided clamps					
6706_POGMT	6	7,2	6	4	1,2
6708_POGMT	8	9,2	6	6	1,2
6710_POGMT	10	11,2	6	8	1,2
6712_POGMT	12	13,2	6	10	1,2
6714_POGMT	14	15,2	6	12	1,2
6716E_POGMT	16	17,5	6	14	1,5
6718_POGMT	18	19,5	6	16	1,5
6720_POGMT	20	21,5	6	18	1,5
6722_POGMT	22	23,5	6	20	1,5
6725_POGMT	25	26,5	6	23	1,5
double-sided clamps					
6716ED_POGMT	16	17,2	6	14	1
double-sided clamps					
6706_POBD	6	7,2	0	4	1,2
6708_POBD	8	9,2	0	6	1,2
6710_POBD	10	11,2	0	8	1,2
6712_POBD	12	13,2	0	10	1,2
6714_POBD	14	15,2	0	12	1,2
6716E_POBD	16	17,5	0	14	1,5
6718_POBD	18	19,5	0	16	1,5
6720_POBD	20	21,5	0	18	1,5
6722_POBD	22	23,5	0	20	1,5
6725_POBD	25	26,5	0	23	1,5
double-sided clamps					
6708D_POBD	8	9	0	6	1
6710D_POBD	10	11	0	8	1
6712D_POBD	12	13,2	0	10	1,2