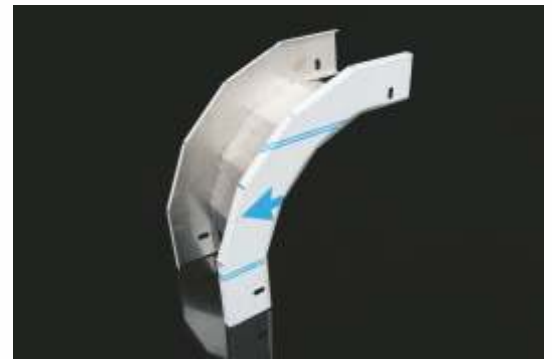


item number	for width of cable tray (A)	for height of cable tray (H)	B	thickness of metal sheet
NIXKO 90X50X62	62	50	240	0,8
NIXKO 90X50X125	125	50	240	0,8
NIXKO 90X50X250	250	50	240	0,8
NIXKO 90X100X125	125	100	290	0,8
NIXKO 90X100X250	250	100	290	0,8
NIXKO 90X100X500	500	100	290	0,8



product description: The low elbow is designed for the transition between a horizontal and sloping (vertical) cable tray.

Connect by inserting the cable tray directly into the accessories and securing it with NIXSM 6X10 bolts. To protect the cables, the bolt head is inside the cable tray.

configuration: IX - stainless steel AISI 304 (AISI 316, AISI 316L only to order)

sales amount: á 1 pc

certification: EN 61537:02

storage: EN 60721-3-1

