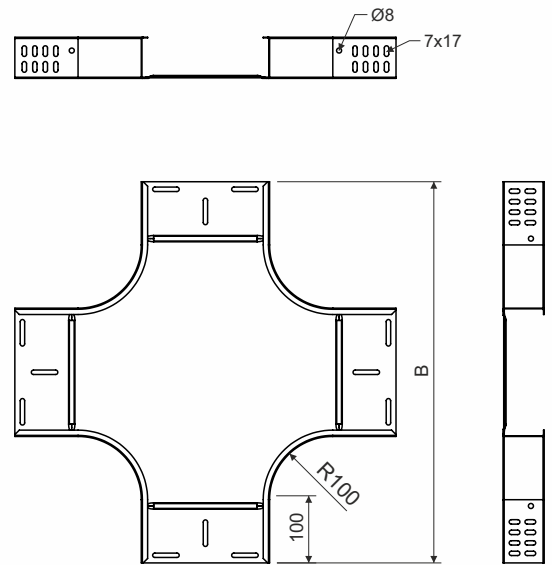
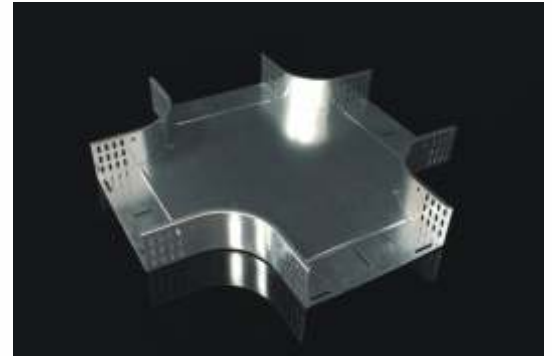


type number	for width of cable tray (mm)	for height of cable tray (mm)	B (mm)	thickness of metal sheet (mm)
KR 60X50_S	50	60	450	0,8
KR 60X75_S	75	60	475	0,8
KR 60X100_S	100	60	500	0,8
KR 60X150_S	150	60	550	0,8
KR 60X200_S	200	60	600	1,0
KR 60X300_S	300	60	700	1,0
KR 60X400_S	400	60	800	1,0
KR 60X500_S	500	60	900	1,0
KR 60X600_S	600	60	1000	1,2
KR 60X50_F	50	60	450	0,8
KR 60X75_F	75	60	475	0,8
KR 60X100_F	100	60	500	0,8
KR 60X150_F	150	60	550	0,8
KR 60X200_F	200	60	600	1,0
KR 60X300_F	300	60	700	1,0
KR 60X400_F	400	60	800	1,0
KR 60X500_F	500	60	900	1,0
KR 60X600_F	600	60	1000	1,2



product description: The cross-over is used to connect cable trays that cross over on one level running through JUPITER cable trays or cable ladders of the same width.
 To fix the connection use the bolt NSM 6X10. To protect the cables, the bolt head is inside the cable tray.
 A bolt with a GMT surface finish is used for a tray with an F surface finish.

surface finish: S - Pre-Galvanized, zinc-layer 15 - 27 µm
 F - Hot Dip Galvanized, average zinc-layer 55 µm (min. 45 µm)
 EO - epoxy paint for indoor environment - paint over the perimeter - 60 µm
 EC - epoxy paint for indoor environment - total paint - 60 µm

sales amount: á 1 pc

certification: EN 61537:02

classification: ČSN 73 0895 P 90-R
 DIN 4102-12 E 90
 STN 92 0205 PS 90
 Fire classification is depend on the specific conditions of the cable tray, detailed in the catalog Systems with maintained functionality in fire
 Systems may be supplied with various surface finishes whereas the surface finish does not affect the determined maintained time of operability in fire.

storage: EN 60721-3-1

