

PRODUCT-DETAILS

N2214.5 CV

Card switch Champagne - Zenit



General Information

Extended Product Type	N2214.5 CV
Product ID	2CLA221450N1901
EAN	8427238093147
Catalog Description	Card switch Champagne - Zenit
Long Description	<p>Color: Champagne. Rated voltage: 110 - 250 Vac; 50/60 Hz Rated current: - Incandescent/halogen: 3.000W@230Vac / 1.600W@127Vac - Fluorescent: 1.300VA@230Vac / 700VA@127Vac - Electronic and ferromag. transf. and motors: 3.000VA@230Vac / 1.600VA@127Vac For 54mm width cards Locator LED lamp included Time delayed switch: 5 - 90 seconds Size: 2 modules.</p>

Installation

Instructions and Manuals	2CLX811459A1001
Mounting Type	Flush Mounted

Technical

Data Sheet, Technical
Information

9AKK10103A5108

Number of Batteries	0
---------------------	---

Electrical

Rated Voltage (U_r)	230 V
Rated Current (I_n)	16 A
Frequency (f)	50...60 Hz
Minimum Switching Capacity	3000...3000 W
Load Type	Universal

Design

Design Range	Zenit
Surface Finishing	Decor Matt
Material	Plastic Thermoplastic
Color	Champagne

Material Compliance

RoHS Information	2CLC221450N1901
RoHS Status	Following EU Directive 2011/65/EU and Amendment 2015/863 July 22, 2019
REACH Declaration	9AKK108467A7464
Conflict Minerals Reporting Template (CMRT)	9AKK108468A3363

Environmental

Ambient Air Temperature	Operation -5 ... +35 °C Storage -5 ... +50 °C
-------------------------	--

Dimensions

Product Net Width	44 mm
Product Net Height	44 mm
Product Net Weight	0.083 kg

Ordering

Replaced Product ID (OLD)	2CLA221450N1902
---------------------------	-----------------

Certificates and Declarations

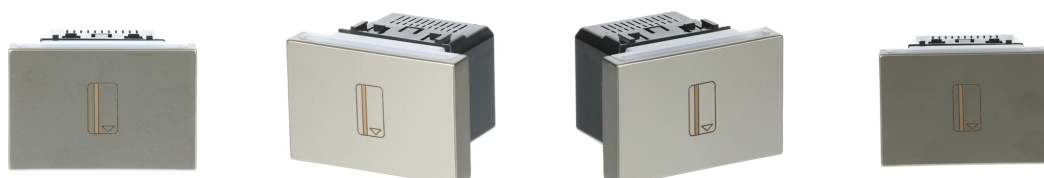
Declaration of Conformity - CE	9AKK106930A5901
--------------------------------	-----------------

Classifications

ETIM 9	EC001588 - Electronic switch
UNSPSC	39122244
WEEE Category	5. Small Equipment (No External Dimension More Than 50 cm)
WEEE B2C / B2B	Business To Consumer

Categories

Low Voltage Products and Systems → Wiring Accessories - Light Switch Ranges → Cover Plates and Control Elements → Electronic Controls



360