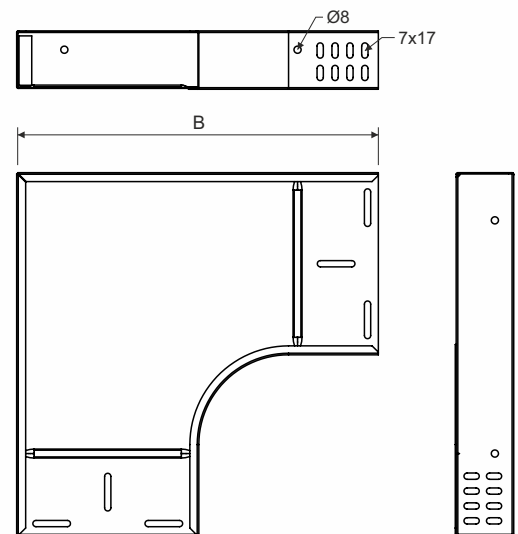
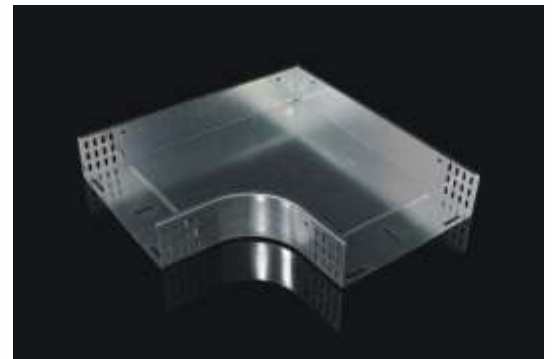


item number	width of cable tray (mm)	height of cable tray (mm)	B (mm)	thickness of metal sheet (mm)
O 90X60X50_S	50	60	250	0,8
O 90X60X75_S	75	60	275	0,8
O 90X60X100_S	100	60	300	0,8
O 90X60X150_S	150	60	350	0,8
O 90X60X200_S	200	60	400	1,0
O 90X60X300_S	300	60	500	1,0
O 90X60X400_S	400	60	600	1,0
O 90X60X500_S	500	60	700	1,0
O 90X60X600_S	600	60	800	1,2
O 90X60X50_F	50	60	250	0,8
O 90X60X75_F	75	60	275	0,8
O 90X60X100_F	100	60	300	0,8
O 90X60X150_F	150	60	350	0,8
O 90X60X200_F	200	60	400	1,0
O 90X60X300_F	300	60	500	1,0
O 90X60X400_F	400	60	600	1,0
O 90X60X500_F	500	60	700	1,0
O 90X60X600_F	600	60	800	1,2



product description: The elbow 90° is used to bend cable trays running through JUPITER cable trays or cable ladders by 90° in a horizontal direction.

The elbow has the outside right angle of sidewalls replaced by canting starting at width of 400mm.

Use the bolt NSM 6X10 for connection. The bolt head should be inside the cable tray to protect the cables.

A bolt with a GMT surface finish is used for a tray with an F surface finish.

surface finish: S - Pre-Galvanized, zinc-layer 15 - 27 µm
 F - Hot Dip Galvanized, zinc-layer 50 - 100 µm
 EO - epoxy paint for indoor environment - paint over the perimeter - 60 µm
 EC - epoxy paint for indoor environment - total paint - 60 µm

sales amount: á 1 pc

certification: EN 61537:02

classification: ČSN 73 0895 P 90-R
 DIN 4102-12 E 90
 STN 92 0205 PS 90

Fire classification is depend on the specific conditions of the cable tray, detailed in the catalog Systems with maintained functionality in fire

storage: EN 60721-3-1

