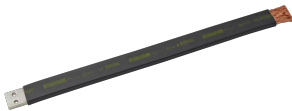


# Przewód nVent ERIFLEX Flexbus, 360 mm<sup>2</sup>, 6 000 mm x 25 mm x 12,5 mm x 11 kg

## NUMER KATALOGOWY

### FLEXCOND360L6



nVent ERIFLEX Flexbus Conductor is ready-to-use from one side with direct connection to busbar or circuit-breaker palm. It is an innovative and patented connection solution between two pieces of electrical equipment (such as a transformer, switchboard or generator). Flexbus Advanced maintains a high level of reliability and creates an easy and customizable connection on-site without additional design study, specific specialized workforce or expensive tools. The Flexbus Conductor is insulated with a low-smoke, halogen-free, flame-retardant (LSHFFR), high-temperature and class II material. Flexbus Conductor is a flexible, copper-plated, aluminum flat braid with insulation available from 2 to 25 meters length and under different cross section for 500A to 6300A applications. It allows for connection from the power supply to switchgear with only one conductor per phase up to 1600kVA and with two conductors per phase up to 3150kVA.

## CERTYFIKATY



## CECHY

Flexible insulated copper-plated, aluminum flat braid

Better current/ampacity than cable due to skin effect

Much more flexible than cable

No bending radius to respect

Ready-to-use from one side with direct connection on busbar or circuit breaker palm

Only one conductor per phase from 400kVA (560 A) to 1600kVA (2250 A) and two conductors per phase for 2000kVA (2800 A) to 3150kVA (4435 A)

## CECHY PRODUKTU

---

Article Number: 508014

Cross Section: 360 mm<sup>2</sup>

Length 1 (L1): 6000 mm

Length 2 (L2): 50 mm

Conductor Material: Copper Clad Aluminum

Connector Finish: Cynowany

Connector Material: Miedź

Insulation Elongation: 500 % Min

Insulation Thickness: 2,5 - 3,5 mm

Dielectric Strength: 20kV/mm

Flammability Rating: UL® 94V-0

Halogen Free Rating: UL® 2885;IEC® 60754-1;IEC® 62821-2

Low Smoke Rating: IEC® 61034-2;ISO 5659-2;UL® 2885

Mechanical Resistance Rating: IK09

UV Resistance Rating: UL® 2556;UL® 854

Wire Diameter: 0,2mm

Nominal Voltage, IEC: 1000V;1500V

Max Working Voltage, EN 50264-3-1: 6000V

Working Temperature: -50 do 115°C

Complies With: IEC® 60695-2-11 (Glow Wire Test 960 °C);IEC® 61439.1;IEC® 61439,1 Class II;IEC® 60364

ΔT 60 K: 901A

Width 1 (W1): 58 mm

Width 2 (W2): 50 mm

Height 1 (H1): 21,65mm

Height 2 (H2): 12,3mm

Hole Size (HS): 11 mm

Unit Weight: 11 kg

A: 25 mm

C: 25 mm

D: 12,5 mm

2 Bar Current Coefficient, Non-Symmetric: 1,52

2 Bar Current Coefficient, Symmetric: 2

Installation Standard: AS 3008;BS 7671;CEI 64-8;CSN;DIN VDE 0100;HD 384;IEC® 60364

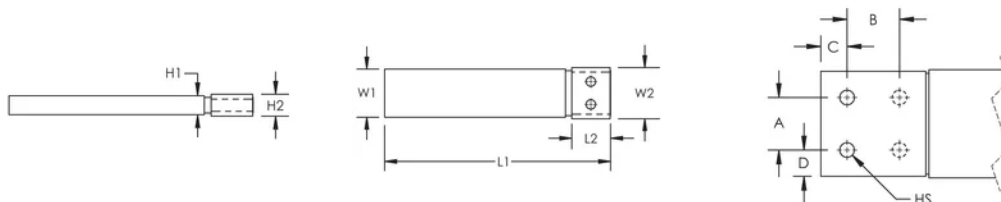
## ADDITIONAL PRODUCT DETAILS

---

Optional extender available for more connection possibilities.

Current Coefficient According to Temperature Rise								
Temperature Rise	$\Delta T$ 30°C	$\Delta T$ 40°C	$\Delta T$ 45°C	$\Delta T$ 50°C	$\Delta T$ 55°C	$\Delta T$ 60°C	$\Delta T$ 65°C	$\Delta T$ 70°C
Derating Coefficient	0.71	0.82	0.87	0.91	0.96	1.00	1.04	1.08

## SCHEMATY



## OSTRZEŻENIE

Produkty nVent powinny być instalowane i używane wyłącznie zgodnie z instrukcjami i materiałami szkoleniowymi nVent. Instrukcje są dostępne na stronie [www.nvent.com](http://www.nvent.com) oraz u przedstawiciela działu obsługi klienta firmy nVent. Nieprawidłowa instalacja, niewłaściwe użycie, niewłaściwe zastosowanie lub inne nieprzestrzeganie instrukcji i ostrzeżeń nVent może spowodować nieprawidłowe działanie produktu, uszkodzenie mienia, poważne obrażenia ciała i śmierć i/lub utratę gwarancji.

### Ameryka Północna

+1.800.753.9221  
 Option 1 – Customer Care  
 Option 2 – Technical  
 Support

### Europa

Netherlands:  
 +31 800-0200135  
 France:  
 +33 800 901 793

### Europa

Germany:  
 800 1890272  
 Other Countries:  
 +31 13 5835404

### APAC

Shanghai:  
 + 86 21 2412 1618/19  
 Sydney:  
 +61 2 9751 8500



Our powerful portfolio of brands:

**CADDY ERICO HOFFMAN ILSCO SCHROFF TRACHTE**