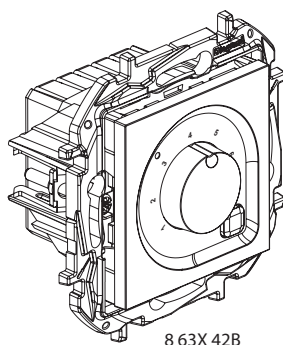
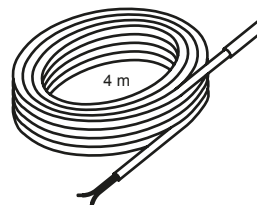


## Niloe™ STEP THERMOSTAT (FLOOR HEATING) German standard

Cat. No(s): 8 631 42B - 8 633 42B - 8 634 42B - 8 635 42B



8 63X 42B



### 1. USE

Control device for programming and regulating heating units for floor heating systems.

Delivered with sonde (4 m).

With N/O free contact and LED.

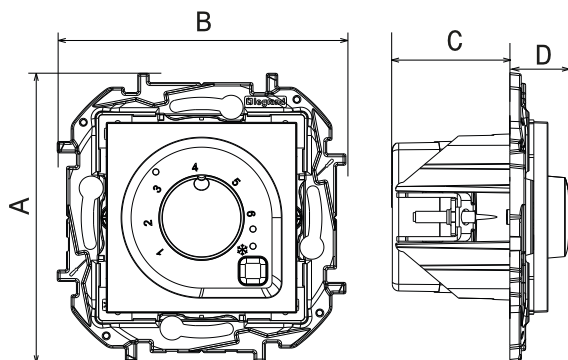
Mechanisms to be equipped with finishes

Screw or claw fixing.

### 2. RANGE

Description	White	Aluminium	Medium Grey	Black
Floor heating thermostat	8 631 42B	8 633 42B	8 634 42B	8 635 42B

### 3. DIMENSIONS (mm)



A	B	C	D
75.8	75.8	31	15.5

### 4. CONNECTION

Number of terminals: 6

Type of terminals: with screws

Terminal capacity:

2 x 1.5...4 mm<sup>2</sup> flexible or rigid cable

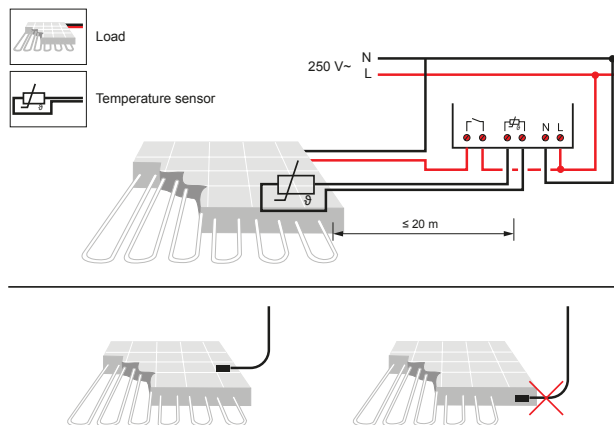
Stripping length:

6 mm

Tool:

flat screwdriver 3.5 mm or PZ1

### 5. WIRING



### 6. FUNCTION

The thermostat (heating/cooling) is equipped with a temperature sensor and provides a changover relay switched depending on the ambient temperature.

The regulation is ensured by an algorithm with a pulse-width controlled output (0...100% thus ensuring a minimal temperature variation relative to the ambient temperature

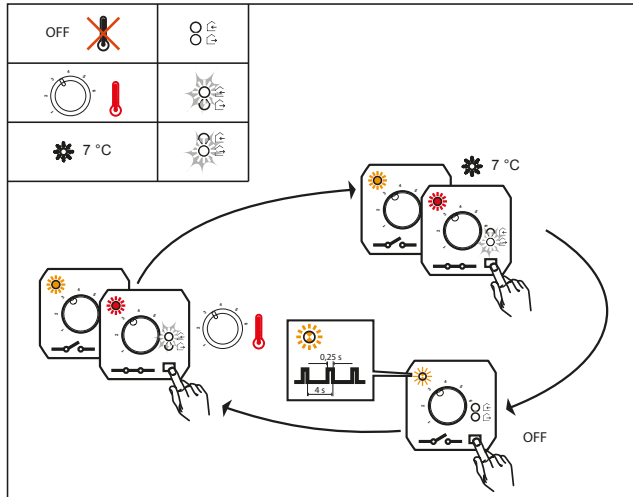
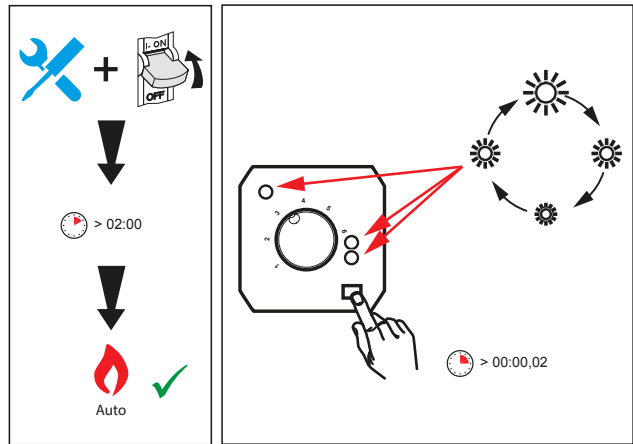
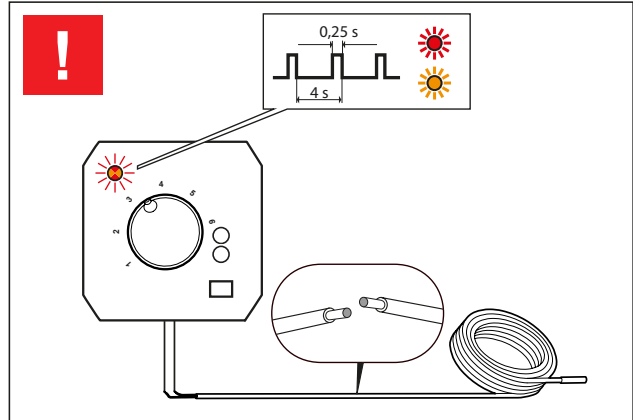
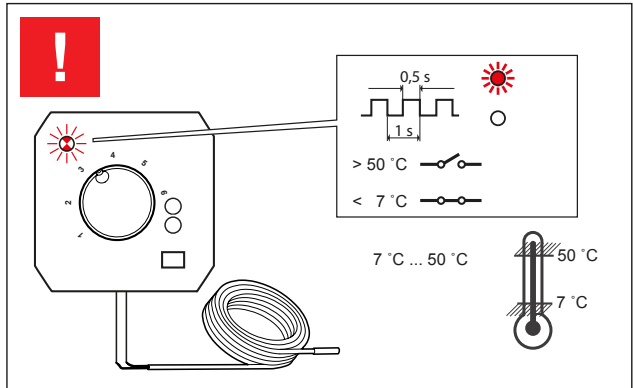
Setting range from room temperature: from 7°C to 40°C

Setting range of the floor temperature:

- max: from 25°C to 50°C

- min: from 7°C to 30°C

■ 6.1 Setting the room temperature (internal sensor)



The external probe is used to limit the temperature in the floor.

- 3 positions for adjusting the floor temperature:
- choice of a maximum temperature (+25°C, +50°C)
  - choice of a minimum temperature (+7°C, +30°C)
  - no temperature measurement (OFF)

Example: Ambient temperature set to 14°C with a protective low temperature set to 10°C, the relay will be switched on as soon as one of the two temperatures will be lower than the respective directions.

7. TECHNICAL CHARACTERISTICS

■ 7.1 Mechanical characteristics

Protection against solid bodies and liquids: IP 40  
Protection against impacts: IK 02

■ 7.2 Material characteristics

Mat appearance  
Material: - Mechanism casing: PC  
- Support: PC grey RAL 7037 + metal  
- Claws: Steel

Halogen free  
UV resistant

Self-extinguishing:  
+ 850° C / 30 s for insulating parts holding live parts in place  
+ 650° C / 30 s for other parts made of insulating materials.

■ 7.3 Electrical characteristics

Voltage: 250 V~  
Current: 16 A  
Frequency: 50/60 Hz

■ 7.4 Climatic characteristics

Storage and usage temperature: - 10° C to + 70° C  
Cooling temperature: - 5° C to + 40° C

8. CLEANING

Surface cleaning with a cloth.

Do not use: acetone, tar remover, trichloroethylene.

Maintenance with the following products:  
Hexane, Methylated spirit, Soapy water, Diluted ammonia, pure bleach diluted to 10%, Window-cleaning products, pre-impregnated wipes.

**Caution:** A preliminary test should be carried out if other specific cleaning products are to be used

9. STANDARDS AND APPROVALS

The undersigned, LEGRAND, declares that the radio-electric equipment type (Cat. Nos 8 631 42B - 8 633 42B - 8 634 42B - 8 635 42B) complies with directive 2014/53/EU. The full text of the EU declaration of conformity is available on the following website: [www.legrand.com/ecatalogue](http://www.legrand.com/ecatalogue)