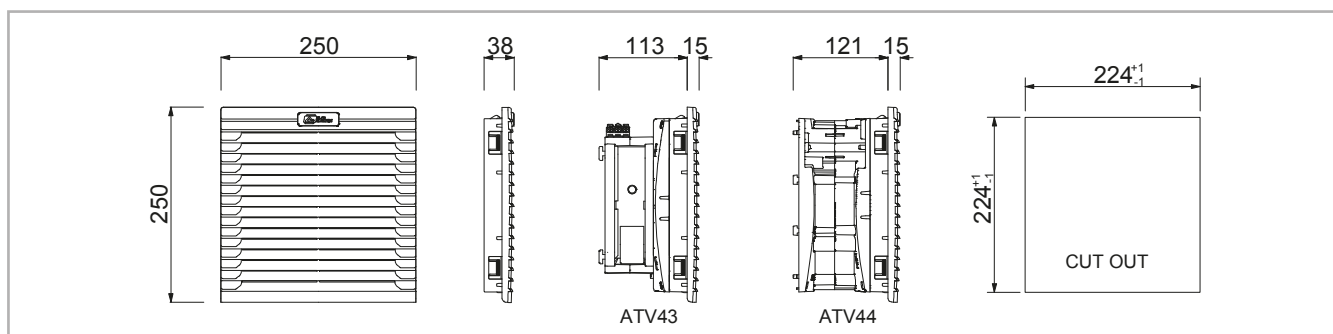




## ATV 43 - ATV 44



IP54		ATV4000	ATV4300	ATV4301	ATV4324	ATV4348	ATV4400	ATV4401	ATV4440
NEMA Type12 cULus File n. E301228		ATV4000U	ATV4300U	ATV4301U	ATV4324U	ATV4348U	ATV4400UPR	ATV4401UPR	-
Air flow rate, free blow	m³/h	-	255 / 290		255		410 / 445		
Air flow rate with exit filter	m³/h	-	202 / 235		202		280 / 302		
Filter mat EN779	-	G3							
IP55		ATV400055	ATV430055	ATV430155	ATV432455	ATV434855	ATV440055PR	ATV440155PR	ATV444055PR
IP55 UV resistant NEMA Type3 cULus File n. E301228		ATV4000V	ATV4300V	ATV4301V	ATV4324V	ATV4348V	ATV4400VPR	ATV4401VPR	ATV4440VPR
Air flow rate, free blow	m³/h	-	210 / 240		210		340 / 365		
Air flow rate with exit filter	m³/h	-	166 / 190		166		230 / 250		
Filter mat EN779	-	G4							
Power supply	V   ph   Hz	-	230   1   50/60	115   1   50/60	24 DC	48 DC	230   1   50/60	115   1   50/60	400   3   50/60
Dimensions HxWxD	mm	250x250x38	250x250x128				250x250x136		
Power consumption	W	-	40 / 38		26	33	70 / 90		60 / 70
Current consumption	A	-	0.17 / 0.16	0.34 / 0.32	1.08	0.68	0.40 / 0.38	0.80 / 0.76	0.18 / 0.15
Overcurrent protection	-	-	thermal		impedance		thermal		
Electrical connection	-	-	3-poles spring terminals *		2-poles spring terminals *		3-poles spring terminals *		4-p s t *
Duty cycle	-	-	100%						
Operating temperature	°C (°F)	-10 / +70 (+14 / +158)							
Protection class	-	-	Class I						
Noise level	dB(A)	-	53 (58)		61		65 (68)		
Flow direction	-	-	reversible, default factory setting outside-in (inside-out for UPR, 55PR and VPR models)						
Bearing	-	-	ball						
Service life (at 40°C)	hr	-	50 000						
Material	-	thermoplastic UL94V-0, color RAL7035							
		(IP55 UV resistant): thermoplastic, color RAL7035							
Wall thickness	mm	1.2 - 2.4							
Gasket	-	Foam seal gasket							
Weight (with packaging)	kg	0.52 (0.62)	1.72 (1.92)		1.53 (1.73)		2.74 (2.94)		
Package dimensions H x W x D	mm	270x270x47	270x270x165						
Mounting	-	Fast clip-on							
Conformity/Certifications	-	CE, UL cULus (model with U letter at the end of the code)							
* 0.5-2.5mm²									
Accessories									
Thermostat 0-60°C, NO contact	-	-	THV2						
Fan speed controller	-	-	FSC1		-		FSC1		-
Hood for IP56	-	CUFF20B							



Specifications, values and drawings are subject to change without notice.



## T-FAN | Filter Fans

High performance, fast mounting and easy maintenance



### Modern design

A positive visual impact is given by the up-to-date design of the grills and the minimal external projection. All molded parts are made of highly resistant and self-extinguishing ABS, UL94 V-0 grade. The standard color is RAL 7035.



### Easy maintenance

Easy maintenance thanks to openable front grill. Replacement of soiled filter mat takes only few seconds and doesn't require tools.



### Wide range of air flow ratings

Flow ratings from 26 to 700 m<sup>3</sup>/h.



### Optimal enclosure protection

The special configuration of the grill, the foam seal gasket and the filter mat ensure an IP54 protection degree towards the enclosure.



### Quick electrical connection

ATV are fitted with spring terminals for a faster and safer wiring. Default terminals position is on the top of the fan but it can easily be changed at the bottom according to wiring needs without tools, thanks to Fan Quick Lock system.



### Fan Quick Lock (FQL)

Default air flow direction is from outside towards inside the enclosure. If needed the user can easily reverse the direction thanks to the Fan Quick Lock system, without tools.



### Fast installation

Installation is fast thanks to the simple square cutout on the enclosure and to the snap-in fixing system. No screws are needed.

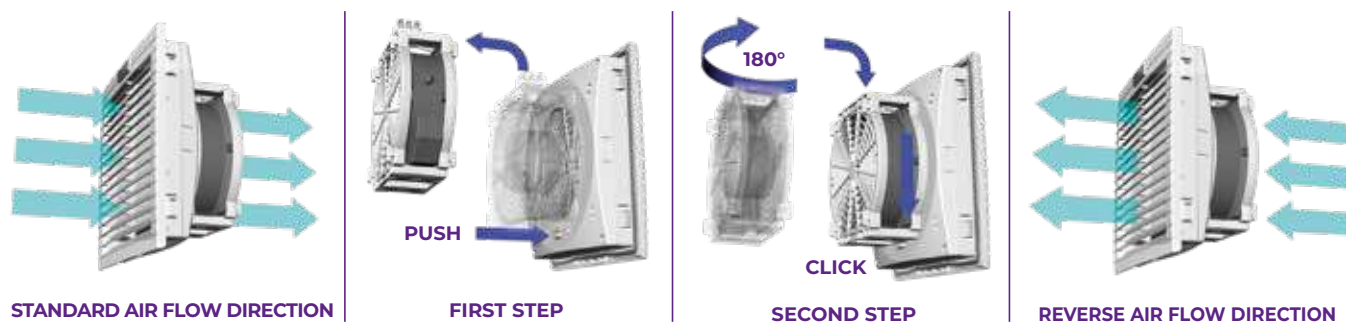


# T-FAN

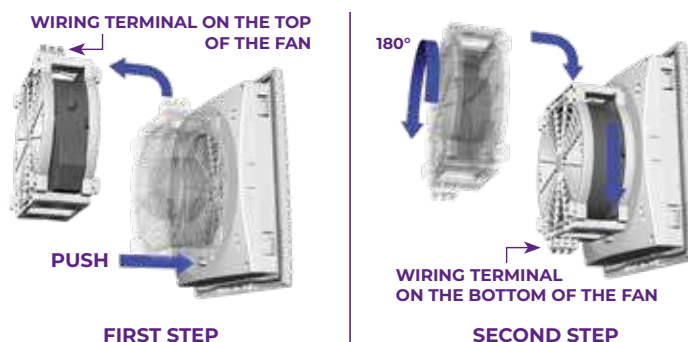


## FAN QUICK LOCK (FQL)

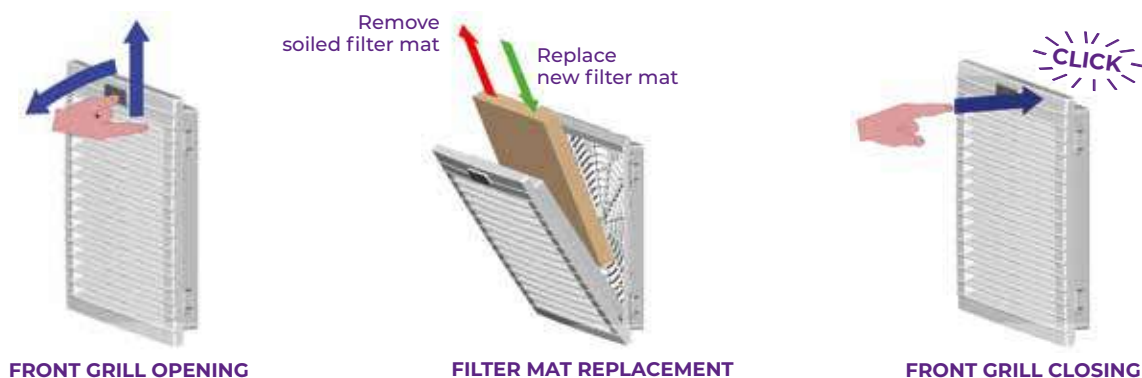
Reverse Air Flow



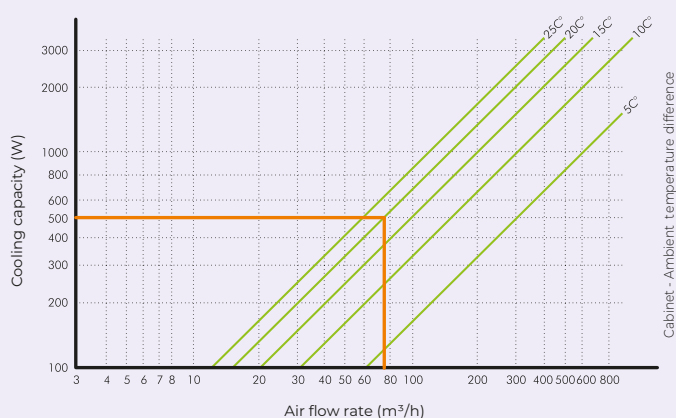
Terminal  
top/bottom  
inversion



## EASY MAINTENANCE Fast filter mat replacement (FMR)



### COOLING PERFORMANCE DIAGRAM



### FILTER FAN SELECTION WITH WATT-A-CALCULATOR



Watt-a-Calculator is a selection software that makes the best model for the specific customer application. Watt-a-Calculator is available on Alfaelectric web site. Please visit it and follow the easy instructions to find your solutions.  
[www.alfaelectric.com/wattcalc](http://www.alfaelectric.com/wattcalc)

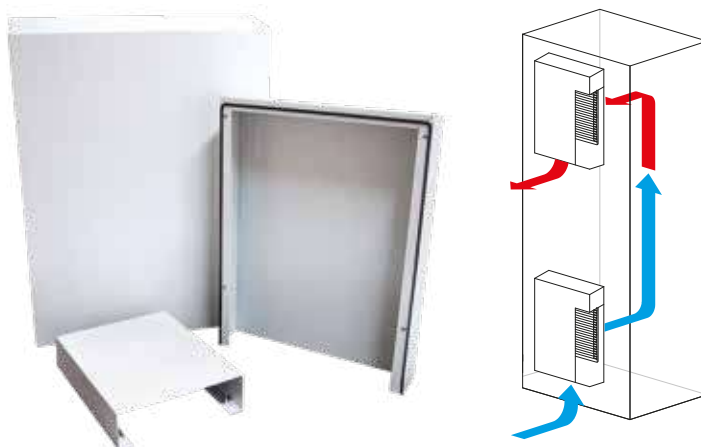
Specifications, values and drawings are subject to change without notice.



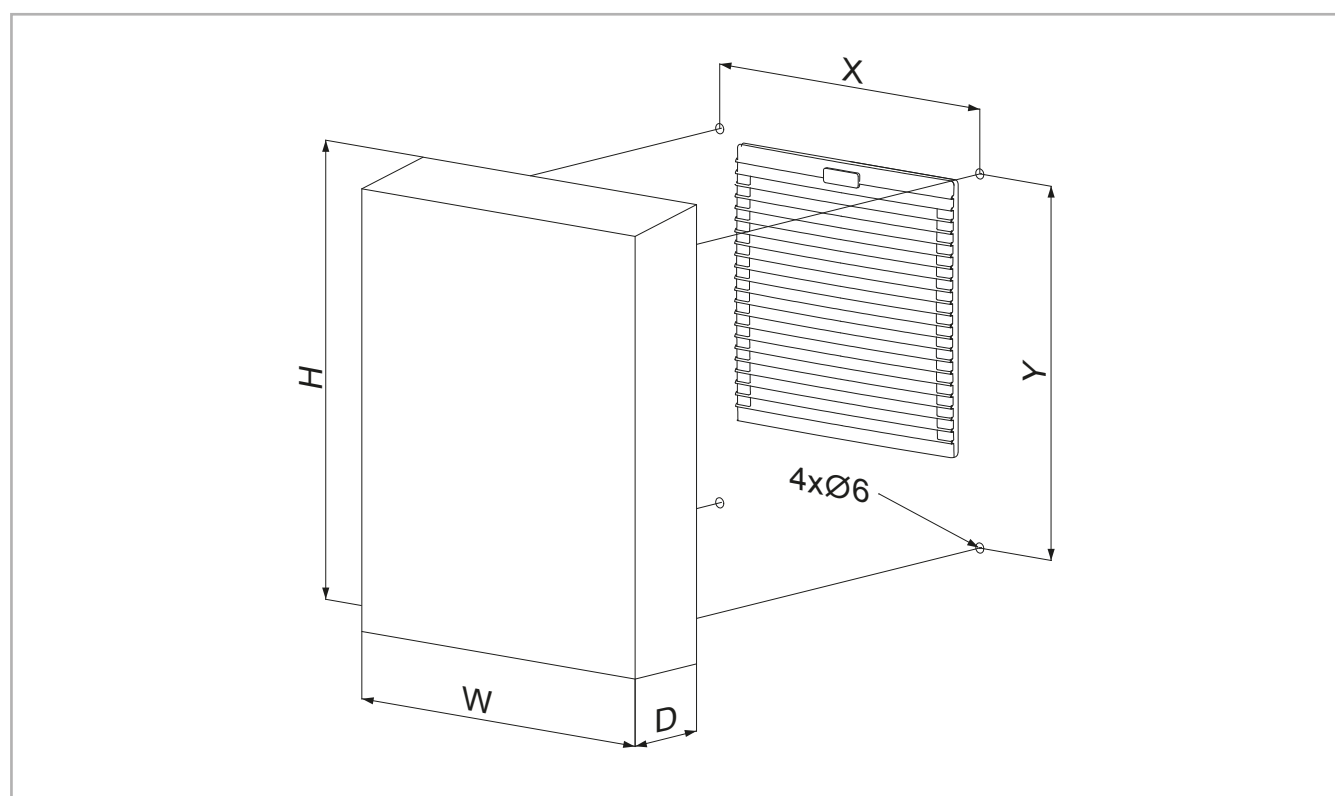
## CUFF

### PROTECTION HOODS FOR FILTER FANS

Protection hoods allows to achieve IP56 protection degree for filter and filter fan applications



FEATURES		Unit	CUFF10B	CUFF20B	CUFF30B	CUFF10X	CUFF20X	CUFF30X
Suitable for		-	ATV1 / ATV2	ATV3 / ATV4	ATV5	ATV1 / ATV2	ATV3 / ATV4	ATV5
			ALFAA / ALFA1	ALFAB / ALFA2	ALFA3	ALFAA / ALFA1	ALFAB / ALFA2	ALFA3
Material		-	Galvanised sheet steel powder coated RAL7035			Stainless steel AISI304		
Dimensions	H	mm	255	425	540	255	425	540
	W	mm	195	325	410	195	325	410
	D	mm	60	60	110	60	60	110
	X	mm	175	305	390	175	305	390
	Y	mm	175	285	440	175	285	440
Mounting		-	By screws					
Gasket		-	foam seal gasket					
Weight		Kg	0.8	1.9	3.3	0.8	1.9	3.3
Conformity		-	CE					

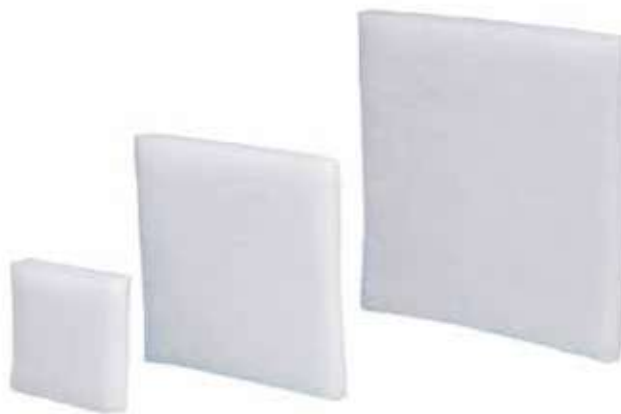




## ATVF - ALFAF

### SPARE FILTER MATS FOR FILTER FANS

Standard filter mats for filter fans and filter only units. To keep high performance it is necessary to periodically check the level of filter mat clogging and, if necessary, replace it with a new one. These filters are made of self-extinguishing synthetic fibres with a progressive filtering capacity.



FEATURES	ATVF1	ATVF2	ATVF3	ATVF4	ATVF5
Supported products	ATV1 series	ATV2 series	ATV3 series	ATV4 series	ATV5 series
Filter class	G2	G3			
Pcs in 1 pack	10				
FEATURES	ALFAFBPA0	ALFAFBP10	ALFAFBPB0	ALFAFBP20	ALFAFBP30
Supported products	ALFAA series	ALFAI series	ALFAB series	ALFA2 series	ALFA3 series
Filter class	G2	G3			
Pcs in 1 pack	10				
FEATURES	ALFAFT10			ALFAFT15	
Supported products	ALFATORR06__BF   ALFATORR08__BF   ALFATORR10__BF			ALFATORR1450BF-1451BF	
Pcs in 1 pack	10				

## ATVFU

### SPARE FILTER MATS FOR UL CERTIFIED FILTER FANS

UL certified filter mats for filter fans and filter units.

These filters are made of self-extinguishing synthetic fibres with a progressive filtering capacity.

FEATURES	ATVFIU	ATVF2U	ATVF3U	ATVF4U	ATVF5U
Supported products	ATV1U series	ATV2U series	ATV3U series	ATV4U series	ATV5U series
Filter class	G3				
Pcs in 1 pack	10				

## ATVFX - ALFAFX

### HIGH EFFICIENCY SPARE FILTER MATS FOR FILTER FANS

High efficiency filter mats are used in is very fine dust environments.

Air flow rates is substantially reduced and this should be take into account when selecting the filter fan.

FEATURES	ATVF1X	ATVF2X	ATVF3X	ATVF4X	ATVF5X
Supported products	ATV1 series	ATV2 55 series	ATV3 55 series	ATV4 55 series	ATV5 55 series
	ATV1 series	ATV2 V series	ATV3 V series	ATV4 V series	ATV5 V series
Filter class	G3	G4			
Pcs in 1 pack	10				

FEATURES	ALFAFBPA0X	ALFAFBP10X	ALFAFBPB0X	ALFAFBP20X	ALFAFBP30X
Supported products	ALFAA series	ALFA1 series	ALFAB series	ALFA2 series	ALFA3 series
Filter class	G3	G4			
Pcs in 1 pack	10				

Specifications, values and drawings are subject to change without notice.





## ALFAKF

### COMPACT FILTER UNITS

Suitable for direct screw mounting on axial fans.  
They can also be mounted with the fan inside the enclosure.  
Mounting holes diameter Ø6.0-6.5 mm.  
Self-extinguishing plastic, black.

CODE	Description	DIM.[mm]	Pcs in 1 pack
ALFAKF060	Compact filter unit	60x60	1
ALFAKF080	Compact filter unit	80x80	1
ALFAKF092	Compact filter unit	92x92	1
ALFAKF120	Compact filter unit	120x120	1
ALFAKF150	Compact filter unit	150x200	1



## ALFAKR120

### COMPACT FILTER UNITS - HIGH PERFORMANCE

Compact filter unit with reduced pressure drop.  
Filter media, steel or acrylic, is easy accessible and cleanable.  
Available in three versions:

CODE	Description	DIM.[mm]	Pcs in 1 pack
ALFAKR120	Compact filter unit with standard filter mat	125x125x10	20
ALFAKR120R	Compact filter unit with metallic filter mesh	125x125x10	20
ALFAKR120RF	Compact filter unit with standard filter mat and metallic filter mesh	125x125x10	20



## ALFAGM

### METALLIC PROTECTION GRILLS

Finger guard metallic protection grills for axial fans.  
Range Ø 40-254 mm. Complying with international safety norms.

CODE	Description	DIM.[mm]	Pcs in 1 pack
ALFAGM040	Metallic finger protection grill	Ø 40	100
ALFAGM060	Metallic finger protection grill	Ø 60	100
ALFAGM080	Metallic finger protection grill	Ø 80	100
ALFAGM092	Metallic finger protection grill	Ø 92	100
ALFAGM120	Metallic finger protection grill	Ø 120	100
ALFAGM127	Metallic finger protection grill	Ø 127	100
ALFAGM150	Metallic finger protection grill	Ø 150	100
ALFAGM220	Metallic finger protection grill	Ø 220	100
ALFAGM254	Metallic finger protection grill	Ø 254	100



## SPINOTTO

### FAN POWER CORDS

Suitable to all fast-on connection fans. Black cable with injection moulded straight plug for 2,8x0,5 mm pins.

CODE	Description	Pcs in 1 pack
SPINOTTOA2-06	Straight power cord 600 mm.	1
SPINOTTOA2-10	Straight power cord 1000 mm.	1
SPINOTTOA2-20	Straight power cord 2000 mm.	1



Specifications, values and drawings are subject to change without notice.