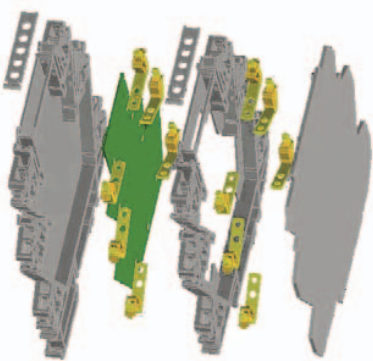
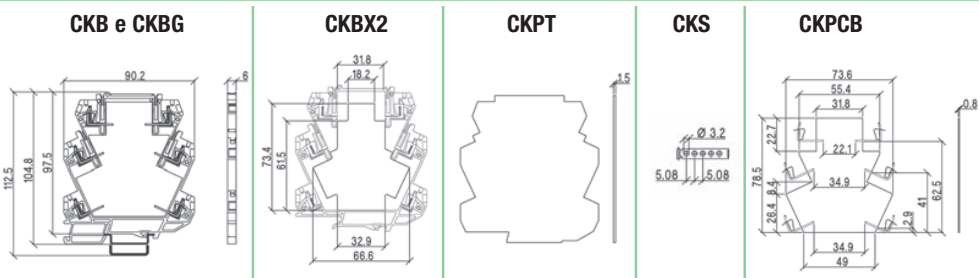


# Housing for custom applications CK series

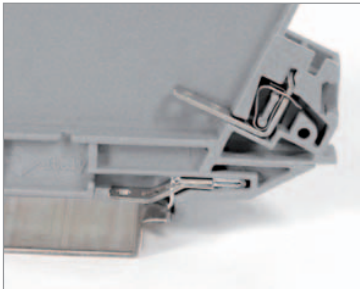
- 6 mm wide, expandable modules
- 6 spring-clamp 2,5 mm<sup>2</sup> / AWG 26 ÷ 14 terminal blocks
- Jumper insertion possibility on each of the 4 levels
- Hinged front cover access to the printed circuit board



NOTES		BLOCK DIAGRAM			
(1) 6 spring-clamp terminal blocks included with solder contact					
(2) In order to assure the IP20 protection degree, the last module must be protected and insulated using the CK/PT end section					
VERSIONS					
Standard base					
Base element with ground contact					
Expansion module					
End section					
Front hinge cover					
Printed circuit board					
GENERAL TECHNICAL DATA					
Rated voltage of each terminal block		230 Vac/dc ± 10%			
Rated current of each terminal block		≤ 24 A			
Operating temperature		-40...+ 100°C			
Protection degree (2)		IP20 IEC529 EN60529			
Connection terminals		2.5 mm², AWG26-14 spring type			
Housing material		polyamide UL 94V0			
Approx. weight		20 g (CKB, CKBG), 15 g (CKX2, CK/PT) 20 g (CK/PT), 1 g (CK/S), 5 g (CK/PCB)			
Parallel bridge		PTC/CK/42 Cat. No. PTCCK42 (42 poli)			
Marking tags		CNU/8/030 Cat. No. NU0851			
Mounting information		on rail			
MOUNTING ACCESSORIES					
Mounting rail type according to IEC60715/TH35-7.5		PR/3/AC, PR/3/AC/ZB, PR/3/AS, PR/3/AS/ZB			
Mounting rail type according to IEC60715/G32		—			
Jumper bridge		—			
		—			
		—			
		—			

APPLICATIONS	
<p>With the CK series modular housings, Cabur offers a modular system that provides housings with increasing dimensions in width for simple components as diodes, resistors or more complex circuits with or without the support of a printed circuit board. For the composition of an housing the following items are necessary:</p> <ul style="list-style-type: none"><li>• a base support element, available in two versions: CKB and CKBG; the latter is provided with an electric metal contact on the DIN rail that allows to connect the internal circuit to the ground. Ground contact towards the DIN rail can carry an impulsive current value of 5 KA (8/20 peak). Both models have an external width of 6 mm and internal width of 5 mm; they are also equipped with 6 springclamp terminal blocks and 4 slots for the insertion of a jumper;</li><li>• one or more CKBX2 type expansion modules similar to the base support element, having therefore an external width of 6 mm and a central slot that allows the housing of the bulky components with a height exceeding the overall height of the base support element; the expansion module is also equipped with 6 spring-clamp terminal blocks and 4 slots for the insertion of a jumper;</li><li>• the CK/S front cover, granting access to the interior of the product, is also available. Once in open position it has such a dimension in order to guarantee a IPXXB degree of protection, even when it is not employed;</li><li>• in order to assure the IPXXB protection degree, the last module must be protected and insulated using the CK/PT end section;</li><li>• the CK/PCB printed circuit board is also available; it is useful in low volume custom applications where a special pcb is not designed and also where one requires a prototype without tooling a special printed circuit board.</li></ul>	

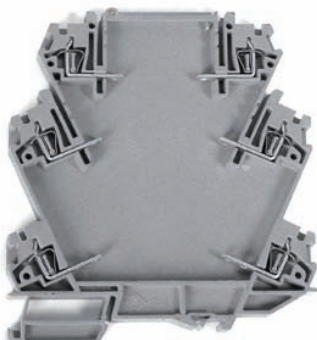
Ground contact on CKBG



CKBX2



CKB



CK/PCB

