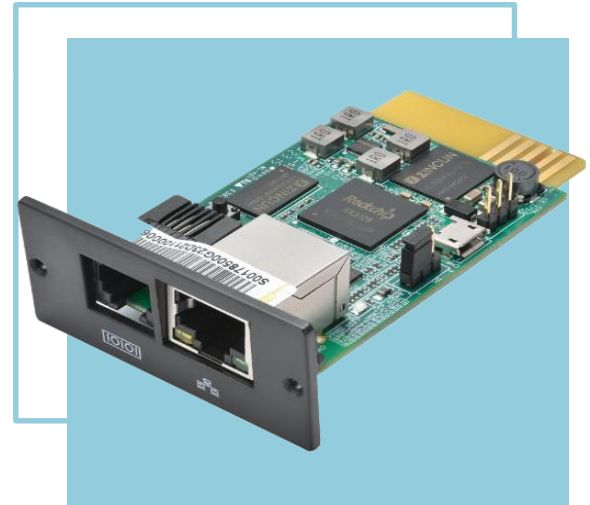


# SNMP Manager NG

## Engineering specifications

Hardware Key Parameters	Specifications
MCU Frequency	1G
DDR	512 MB
Storage	8 GB eMMC
Network	10M/100M/1000M
Power Consumption	1.4 Watt (Max.)
Dimension, D*W*H (mm)	79 x 52 x 25
Net Weight (kg)	0.02



### Secure by Design

- Secure access SSH, HTTPS.
- 2048-bit encryption key support (SSH/web).
- Strict password security credentials and forced password policy configurations.
- Secure email authentication.
- EAPoL (Extensible Authentication Protocol over LAN). architecture used in IEEE 802.1p port-based network access control.
- ACL (Access Control List) IP access control.
- Support users to upload certificates.

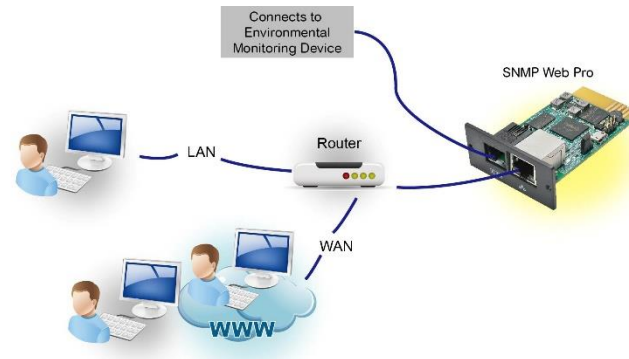
Function	Key Benefits
Web UI	Securely monitor and manage your device remotely via any supported browser, giving you mission critical visibility.
Communications Protocol Support	SNMP v1/V2c/v3, BACnet, Modbus TCP, MQTT
EcoStruxure™ IT integrations	<ul style="list-style-type: none"><li>• Centrally monitor : ViewPowerPro</li><li>• Shutdown wizard for shutdown (Support VMWare)</li></ul>
Notifications and logging	<ul style="list-style-type: none"><li>• Data &amp; Event Logs (More than one year)</li><li>• Syslog ,Email Notifications:</li><li>• SMS (Need GSM Modem)</li></ul>
Protocol Support	RADIUS ,SSH ,SCP, FTP, Telnet (Default disable)
Network Port Speed	RJ45 10M/100M/1G
Network Compatibility	IPv4, IPv6, HTTPS, HTTP (Default disable)
Language Support	English
Sensor Support	Expand through EMD: Temperature & Humidity and Two dry contacts Note: There is only one choice between EMD and GSM modem
Operating environment	<ul style="list-style-type: none"><li>• Temperature: 0 ~ 70°C</li><li>• Humidity: 0 ~ 95%</li></ul>

# SNMP Manager NG

## Engineering specifications

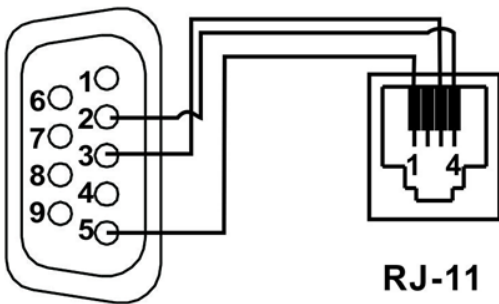
### Ethernet port (RJ45) status LEDs:

Content	Introduction	
Link status LED (Green)	Flash	Link Active
	Off	Card is not connected to the network
1000M LED (Yellow)	Flash	Port is operating at 1000Mbit/s
	Light	Port is operating at 100Mbit/s
	Off	Current web bandwidth is 10Mbit/s



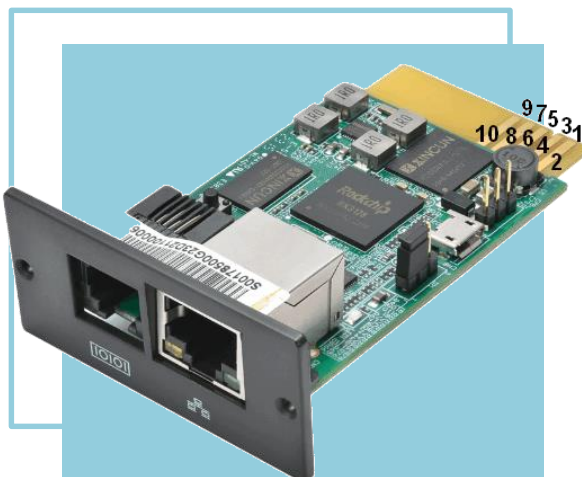
### RJ11 port introduction(Either/or):

- External EMD : Temperature & Humidity and Two dry contacts.
- External GSM : SMS notification.



Pins	Descript
1	GND
2	+12V Power
3	TXD
4	RXD

### Golden finger pin define:



Pins	Descript
1	GND
2	+12V Power
3	TXD
4	RXD
9	GND
5,6,7,10	Not used

#### Note:

*Please refer to the user manual for specific usage configuration.*