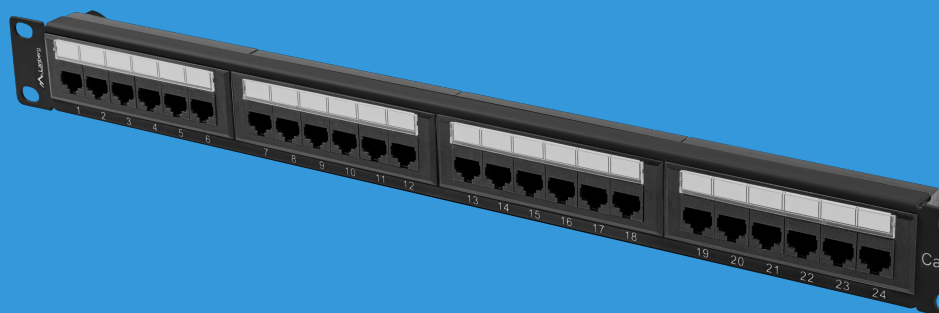


PPUA-1024-B

CAT.6A UNSHIELDED PATCH PANEL



PRODUCT FEATURES:

PRODUCT SPECIFICATION:

Number of ports	24
Connector type	Equipped
Size	19",
ICT height	1 U
ICT category	Cat. 6A
Shielding	No
Equipped with connectors	Yes
Fitting type	IDC/LSA
Material	ABS, Metal
Standard	T568A, T568B
Ports identification in the form of numbered fields	Yes
RAL color	RAL9004
Colour	Black
Dimensions	102 x 445 x 44,45 mm
Weight	0,7 kg
Included Accessories	Cable manager

