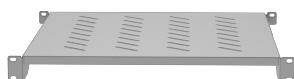
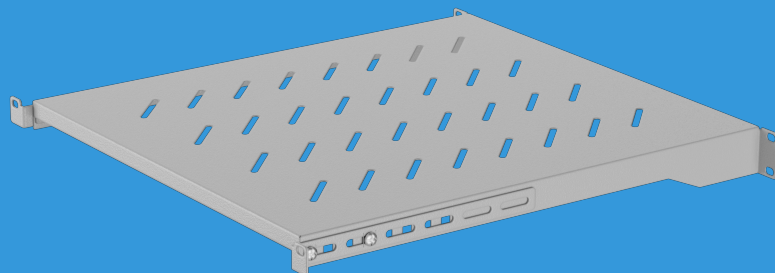


**AK-1005-S**

# SHELF FOR 19" 800MM CABINETS



## PRODUCT FEATURES:

- The perforated structure allows proper air circulation,
- Adjustable installation depth of 510 - 670mm,
- Four-point mounting, M6 screws included,
- Load capacity up to 25KG.

## PRODUCT SPECIFICATION:

Type	Shelf
Size	19",
ICT height	1 U
Maximum static load	25 kg
Material	Steel
Colour	Grey RAL7035
Depth	510 mm
Width	482,6 mm
Height	45 mm
Weight	2,02 kg
Required amount of screws	4