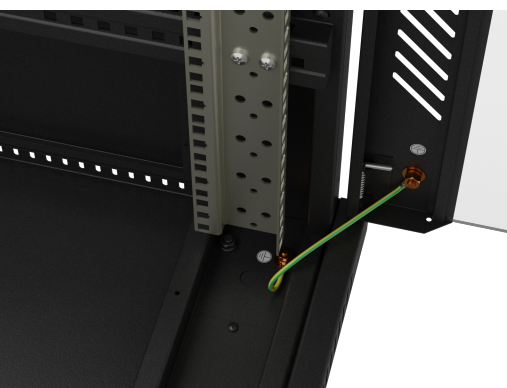
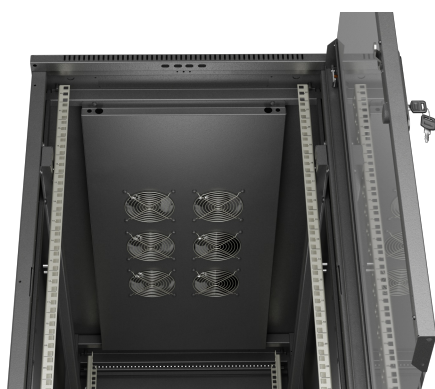




FF01-6222-12B

19" RACK STANDING CABINET



PRODUCT FEATURES:

- Ventilation panel with 6 fans included, which effectively dissipates heat from inside the cabinet, ensuring stable operation of devices even under heavy load.

PRODUCT SPECIFICATION:

ICT height	22 U
Assembly type	Self-assembly
Working depth	1 080 mm
Front door type	Temper glass
Rear door type	Metal
Door type	Single-leaf
Maximum front door opening angle	210 °
Maximum static load	800 kg
Slot amount for fans	6
Number of vertical rails	4
Thermostat	No
LCD panel	No
Colour	Black
RAL color	RAL9004
Weatherproof rating	IP20
Upper & lower panel thickness	1,2 mm
Mounting rails thickness	2 mm
Frame thickness	1,2 mm
Other elements sheet thickness	1,2 mm
Depth	1 200 mm
Width	600 mm
Height	1 200 mm
Height without casters	1 128 mm
Weight	87 kg
Standard	ANSI/EIA RS-310-D, DIN 41491/PART 1, DIN 41494/PART 7, ETSI, IEC297-2:1982
Grounding Details	Front door, Back door, Frame
Included Accessories	User Manual, User guide, Grounding cable, Wheels with brake, Legs, Ventilation panel (6 fans), M6 screws, Front lock, Rear lock, Side locks