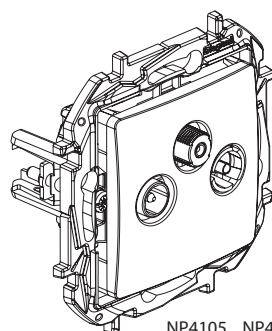
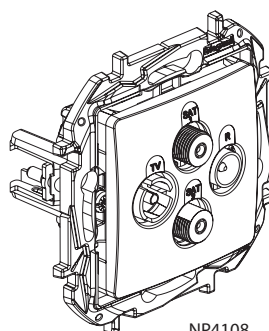


## Niloe™ TV-R-SAT sockets, TV-R-SAT-SAT socket

Cat. No(s): NP4105BK/MG/WH, NP4106BK/MG/WH,  
NP4107BK/MG/WH, NP4108BK/MG/WH



NP4105.., NP4106.., NP4107..



NP4108..

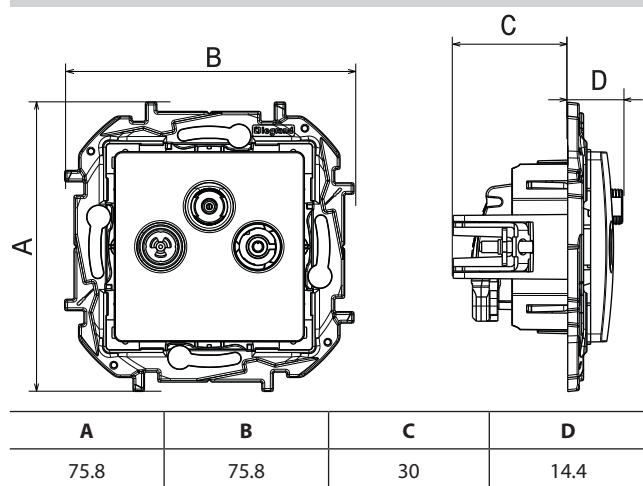
### 1. USE

TV/R/SAT + DAB+: for receiving TV, radio and satellite signals.  
UHD (ultra high definition) compatible.  
Class A shielded star sockets LTE Ready (4G protected).  
Recommended coaxial cable 17/19 VATC. Single cable entry.  
Can be flush mounted in a box min. 40 mm deep.  
Fixing with screw and/or claw.

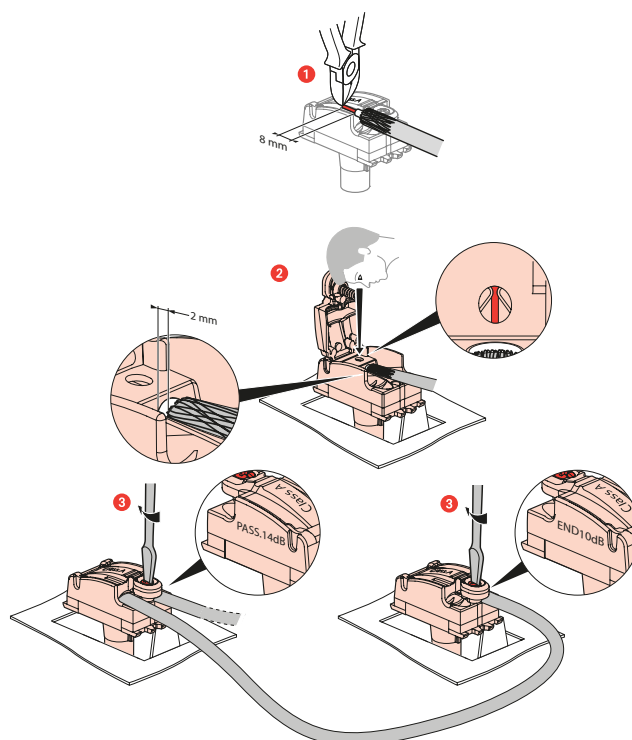
### 2. RANGE

Description	White	Medium Grey	Black
TV-R-SAT MALE PASSTHROUGH 14dB	NP4105WH	NP4105MG	NP4105BK
TV-R-SAT MALE STAR	NP4106WH	NP4106MG	NP4106BK
TV-R-SAT MALE TERMINAL 10dB	NP4107WH	NP4107MG	NP4107BK
TV-R-SAT-SAT MALE STAR 2 CABLES	NP4108WH	NP4108MG	NP4108BK

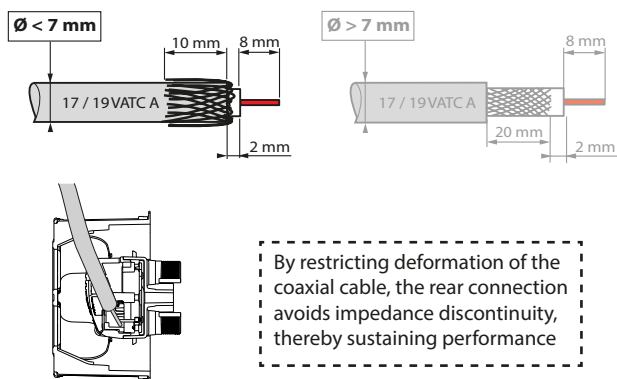
### 4. DIMENSIONS (mm)



### 5. CONNECTION



## 6. WIRING PRECAUTIONS



## 7. TECHNICAL CHARACTERISTICS

### ■ 7.1 Mechanical characteristics

Protection against solid bodies and liquids: IP20  
 Protection against impact: IK04  
 Cable resistance: 120 N

### ■ 7.2 Material characteristics

Polyglass appearance

Material: - Cover: ABS  
 - Base: PC  
 - Halogen-free  
 - UV-resistant

Motor: - Casing: zamac  
 - Cover: zamac  
 - Pin: bronze  
 1- screw: galvanized steel

Self-extinguishing:

850°C/30 s for insulating components holding live parts in place  
 650°C/30 s for other insulating components

### ■ 7.3 Electrical characteristics

- Impedance : 75 ohm  
 - Male connector  $\varnothing$  9.52 mm  
 - Class A shielding efficiency (class A shielding is necessary to prevent interference caused by using 3 and 4 G phone signals, as these unwanted signals can result in pixellation on screen or adversely affect the sound track).  
 - Frequency bands: TV: 5-68/120-862 MHz  
 - Low attenuation: < 1 dB maximum  
 - Compatible with remote power supply

### ■ 7.4 Climate characteristics

Storage temperature: -10°C to +70°C  
 Usage temperature: -5°C to +40°C

## 8. MAINTENANCE

Surface cleaning with a cloth.

Do not use:

Acetone, tar remover, trichloroethylene.

Maintenance with the following products:

Hexane, Methylated spirit, Soapy water, Diluted ammonia, Bleach diluted to 10%, Window-cleaning products.

**Caution:** Always test before using other special cleaning products.

## 9. STANDARDS AND APPROVALS

Compliance with standards of installation and manufacturing.  
 Refer to e. catalogue.

The undersigned, LEGRAND, declares that the radio-electric equipment type (Cat. Nos NP4105BK/MG/WH, NP4106BK/MG/WH, NP4107BK/MG/WH, NP4108BK/MG/WH) complies with directive 2014/53/EU.

The full text of the EU declaration of conformity is available on the following website: [www.legrand.com/ecatalogue](http://www.legrand.com/ecatalogue)

10. STANDARDS AND APPROVALS

