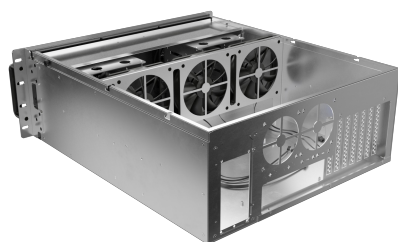
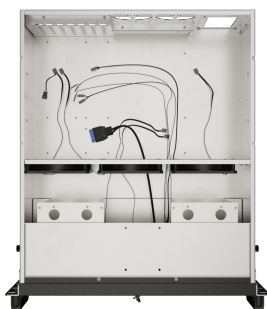




SC01-5204-12B

SERVER CHASSIS 19



PRODUCT FEATURES:

- It supports motherboards in ATX, ITX, Micro-ATX and SSI CEB standards.
- Efficient cooling: 5 120mm PWM fans with adjustable speed (600-1500 RPM), low noise level (33 dB) and 50,000h life span. In addition, space for connecting two 80 mm fans.
- Media space: Offers space for 3 2.5" drives and 10 3.5" drives.
- Two USB 3.0 Type-A ports and Power and Reset buttons.
- Robust construction: Made of 1.2 mm thick galvanized steel.
- Included: Replacement adapter for SFX power supplies, two PWM splitters, dust filter, two 5x SATA power splitters.

PRODUCT SPECIFICATION:

ICT height	4 U
Motherboard form factor	ATX, ITX, Micro-ATX, SSI CEB
Size	19",
Number of installed fans	5
Installed fans	5x 120 mm PWM
Rotational speed	from 600 up to 1 500 RPM
Fan lifetime	50 000 h
Maximum CPU cooling height	158 mm
Fan controller	PWM
Fan noise level	33 dB
Number of 2.5" drive bays (SSD/HDD)	3
Number of 3.5" drive bays (SSD/HDD)	10
Number of expansion slots	7
Compatible power supply standard	ATX, SFX
Power supply included	No
Connectors	USB 3.0 Type-A
Work signal	LED
Material	Steel, Galvanized steel
Environment humidity	from 35 up to 85 %
Working depth	520 mm
Upper & lower panel thickness	1,2 mm
Side panel thickness	1,2 mm
Other elements sheet thickness	1,2 mm
Dimensions	520 x 430 x 176 mm
Weight	12,5 kg
Included Accessories	2x PWM 4-PIN fan splitter, SFX power supply mounting