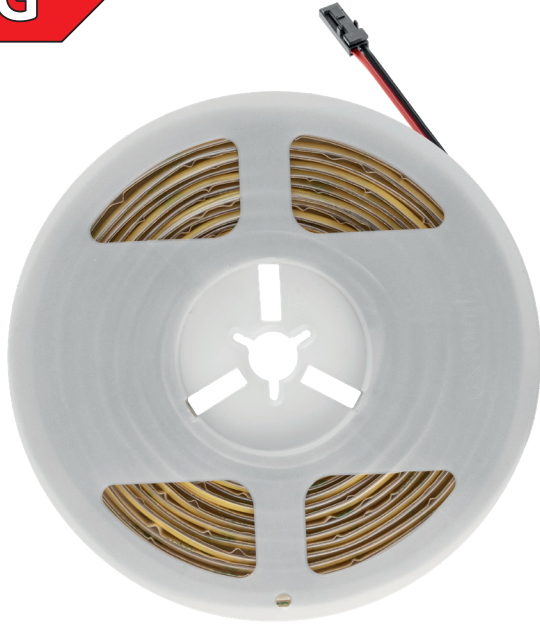


PL Taśma LED **EN** LED tape **DE** LED-Band **RU** Светодиодная лента **CS** LED páska **SK** LED pásik **HU** LED szalag **HR** LED traka **FR** Ruban LED **ES** Tira LED **IT** Nastro a LED **RO** Bandă LED **LT** LED juosta **LV** LED lente **ET** LED riba **PT** Fita LED **BE** Святлодыёдная стужка **UK** Світлодіодна стрічка **BG** LED лента **SL** LED-traka **BS** LED traka **SRP** LED traka **SR** LED трака **MK** LED лента **MO** Bandă LED **AM** Լուսադիոդային ժապավեն **AZ** LED lent **KA** LED ლენტო **KK** Жарықдиодты жолақ **KY** Жарык диоддуу тасма **TG** Навори LED **TK** LED lenta **UZ** LED tasma

**COB**



Folder	W	Light	Color	IP	Length	Width	Quantity	Height	Barcode
LD-COBST12V-480-65-CB	12 V DC 10 W/1m	800 lm/m	● 2700 K	IP 65	180	8	x4	25 mm	5902801625053
LD-COBST12V-480-65-NE			● 4000 K						5902801690921
LD-COBST12V-480-65-ZB			● 6500 K						5902801625077

