

# FLOODLIGHT MAX GEN2

## THE NEW LIGHTING POWER FOR SPORTS



LEDVANCE

### LOW-MAINTENANCE AND COST-EFFICIENT

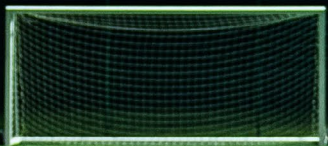
- Energy efficient with 150 lm/W and up to 270 000 lm
- Lifetime of up to 115 000 hours
- Upgrade to LED for significant energy cost savings

### EXTREMELY ROBUST

- IP66/IK08
- Ballproof certified
- Corrosion class C5
- Breather membrane
- Operating temperature: -40 °C to 50 °C

### POWERFUL AND ENVIRONMENTALLY CONSCIOUS LIGHTING

- 0 % ULOR\* for precision light to minimise surrounding light pollution
- 3 000 K warm white light colour available to minimise environmental disturbance to nature



### FLEXIBLE, MODULAR DESIGN FOR VERSATILE APPLICATION USE

- 600/900/1200 & 1800 W
- Asymmetrical light distribution: 65° x 120°
- Additional beam angle versions: R10°, R25° and R45°
- 3 light colours: 3 000, 4 000 and 5 700 K
- Up to CRI 80 – ideal for camera usage

### FLEXIBLE & EASY MOUNTING

- Power supply unit can be mounted separate from floodlights
- Stable bracket with wide rotation range, suitable for single-screw installation
- Built-in physical alignment markers on luminaire head allow precise orientation
- Included safety wire

### EASY CONTROL

- 230–400 V
- DALI (D4i), DMX and 0–10 V
- Powerline and Casambi compatible

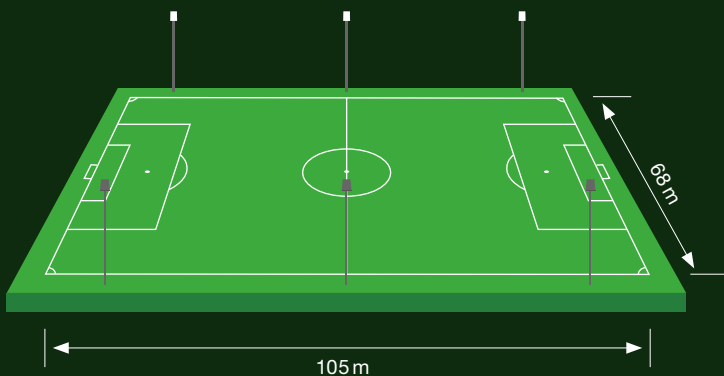
ELIGIBLE FOR  
COMMUNAL  
SUBSIDY  
PROGRAMMES

## FLOODLIGHT MAX GEN 2: INSTALLATION-FRIENDLY DESIGN

- Extremely stable and flexible mount with large rotation range – suitable for single-screw mounting
- **NEW:** Physical alignment marker on the housing for precise visual adjustment during mounting
- **NEW:** Included safety wire for increased mounting safety
- Cables already pre-wired in luminaire heads for direct connection to power supply unit
- Pre-installed cable glands in power supply unit
- Included anti-theft lock feature on power supply unit



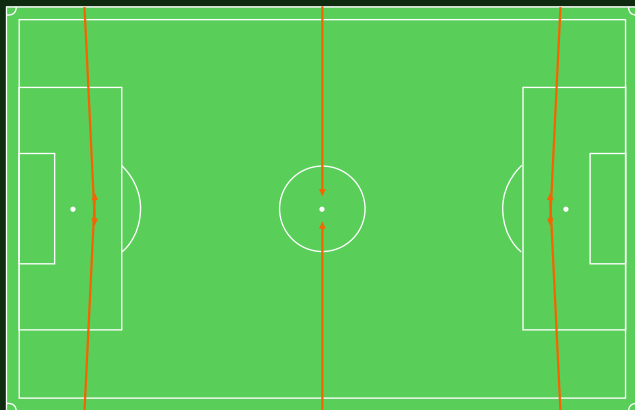
## STANDARD LIGHT PLANNING EXAMPLE FOR FOOTBALL FIELD (105 × 68 M) CLASS III (DIN EN 12193)



### TECHNICAL INFORMATION

- Requirement:  $E_h$  75 lx,  $U_0 > 0.5$ , RG55
- Calculated:  $E_h$  130 lx,  $U_0$  0.67, RG48
- Number of fixtures:  $6 \times 1\,800\text{ W}^*$
- Mast height: 16 m
- Number of masts: 6
- Light colour: 4 000 K

\* Even with  $6 \times 1\,200\text{ W}$ , the standard according to DIN EN 12193 Class III is met.



Example alignment of the floodlights

### FLOODLIGHT MAX FAMILY

Luminaire head + power supply unit (PSU)



Power supply unit can be conveniently mounted separately from floodlights (up to 150 m) in combination with connector box accessory

Product name	EAN (GTIN)	W	lm	K	L × W × H [mm] Ø × H [mm]
<b>FLOODLIGHT MAX G2 ASYM 65°X120°</b>					
FL MAX P 600W 730 A65x120 WAL	4099854 <b>682360</b>	600	77 000	3 000	217 × 589 × 329
FL MAX P 900/1200W 730 A65x120 WAL	4099854 <b>682506</b>	900/1 200	120 800/157 000	3 000	401 × 660 × 782
FL MAX P 1800W 730 A65x120 WAL	4099854 <b>682629</b>	1 800	228 000	3 000	401 × 660 × 870
<hr/>					
FL MAX P 600W 740 A65x120 WAL	4099854 <b>682377</b>	600	84 000	4 000	217 × 589 × 329
FL MAX P 900/1200W 740 A65x120 WAL	4099854 <b>682513</b>	900/1 200	130 800/170 000	4 000	401 × 660 × 782
FL MAX P 1800W 740 A65x120 WAL	4099854 <b>682636</b>	1 800	246 000	4 000	401 × 660 × 870

Product name	EAN (GTIN)
<b>POWER SUPPLY UNITS (PSU) AND ACCESSORIES</b>	
FL MAX PSU DA P 600W WAL	4099854 <b>681646</b>
FL MAX PSU DA P 900W WAL	4099854 <b>681677</b>
FL MAX PSU DA P 1200W WAL	4099854 <b>681653</b>
FL MAX PSU DA P 1800W WAL	4099854 <b>681660</b>
FL MAX CONNECTOR BOX	4099854 <b>696183</b>

Additional beam angle versions available: R10°, R25° and R45°  
Additional light colour version available: 5 700 K