



Monix Slim LED with opal diffuser



MONIX SLIM

Monix Slim is a IP44 luminaire for wet premises with plastic diffuser. Thin multi-purpose luminaire has broad application area; from industry to warehouses, parking halls and general areas both in residential and non-residential buildings. Luminaires for datacenters and other high ambient temperature applications -20 °C to +45 °C.

DALI

DALI drivers enable luminaires to be connected to DALI based control systems and Smart Buildings. Compared to a fixed output installation, the dimming and individual control capability provided by DALI enables considerable energy savings and control, depending on luminaire specifications.

Dimming

Ensto can provide many dimming possibilities for luminaires. 1-10V, Switch Dim, DALI and base light are just few examples of possibilities to change the light output to fit your premises.

Stylish and small universal luminaire to all premises, even and effective light.





Monix Slim



Made to order with spring brackets



Monix Slim with radar

Structure

- Body - white powder coated electro-galvanised steel sheet
- Ends caps - shockproof, heat and UV resistant white ABS plastic
- Diffuser opal plastic (O)
- White gear tray
- AMSR and AMSLR... type models are sensor luminaires equipped with high-frequency (5,8 GHz) radar to detect motion (radar unit)
- In sensor models radar unit is located inside the luminaire and is not visible outside
- LED models:
- Connected load 29W and 21W, length 598 mm, see the luminaire luminous flux from the table
- Connected load 42W and 29W, length 898 mm, see the luminaire luminous flux from the table
- Connected load 54W and 38W, length 1198 mm, see the luminaire luminous flux from the table
- Connected load 65W and 47W, length 1498 mm, see the luminaire luminous flux from the table
- 4000 K, power factor 0,98, Ra >80
- Ambient temperature -20 °C to +35 °C
- Versions for datacenters and other high temperature applications: ambient temperature -20 °C to +45 °C.
- LED module lifespan $T_a=25\text{ °C}$:
 - >100 000 h (L70)
 - 100 000 h (L80)
 - 71 000 h (L90)
- LED driver lifetime $T_a=25\text{ °C}$:
 - 100 000 h (max. 10 % failure rate)

Mounting

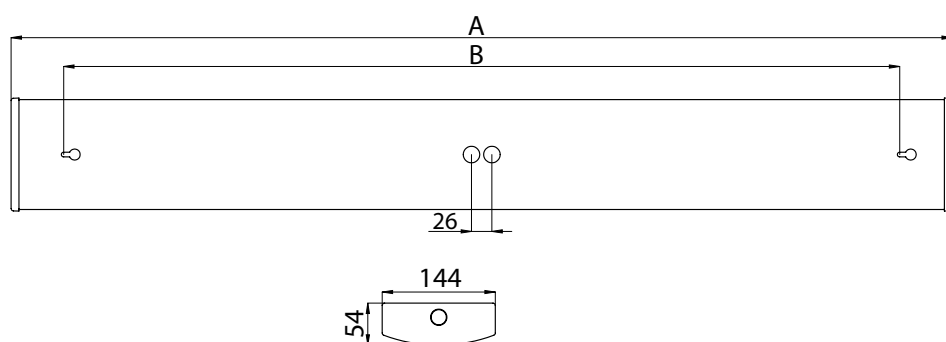
- Directly to the ceiling, on a lighting suspension rail or on the wall. Key holes.
- Connection point in the middle of the luminaire
- Two 21 mm cable entry holes at the bottom of the luminaire
- Blind cable entries at both ends, 21 mm, end wiring is suitable only for 2-tube models
- 5-pole terminal block
- Sensor luminaire models see more accurate information at website
 - To the ceiling max. 4 meters height
 - To the wall max. 2,7 meters height
 - Suitable for stand-alone or master-slave installation
 - Maximum load behind one master is 200W including the master luminaire
- Slave luminaires from the Ensto basic luminaire range

Made to order

- With spring brackets (AMJK2S/AMJK2SV) for MEK70 and (AMJK3S/AMJK3SV) for MEK110 lighting suspension rail mounting
- With spring brackets for XYRV, OBO and Elwia MP lighting suspension rails
- Optimized luminous flux versions to projects
- Through-wiring models (not AMSL6...)

E number	Type	Product name	Base	Kg	Light distribution	A	B	Luminous flux
Monix Slim LED								
43 603 28	AMSL60	AMSL60 IP44 LED 29W/840 AC 0	LED	1,7	K5	598	520	3130/2710/2590/2150 lm
43 611 89	AMSL60/3K	AMSL60/3K IP44 29W/830 AC 0	LED	1,7	K5	598	520	3110/2690/2570/2140 lm
43 605 08	AMSL6020	AMSL6020 IP44 LED 21W/840 AC 0	LED	1,7	K5	598	520	2250/1970/1680/1370 lm
43 611 99	AMSL6020/3K	AMSL6020/3K IP44 21W/830 AC 0	LED	1,7	K5	598	520	2240/1960/1670/1360 lm
43 603 32	AMSL90	AMSL90 IP44 LED 42W/840 AC 0	LED	2,3	K5	898	765	4940/4300/4110/3410 lm
43 611 90	AMSL90/3K	AMSL90/3K IP44 47W/830 AC 0	LED	2,9	K5	898	765	4910/4270/4090/3390 lm
43 605 09	AMSL9030	AMSL9030 IP44 LED 29W/840 AC 0	LED	2,3	K5	898	765	3540/3100/2620/2140 lm
43 613 00	AMSL9030/3K	AMSL9030/3K IP44 29W/830 AC 0	LED	2,3	K5	898	765	3520/3080/2600/2130 lm
43 603 22	AMSL120	AMSL120 IP44 LED 54W/840 AC 0	LED	2,9	K5	1198	1065	6440/5590/5350/4410 lm
43 611 87	AMSL120/3K	AMSL120/3K IP44 54W/830 AC 0	LED	2,9	K5	1198	1065	6400/5560/5320/4380 lm
43 604 87	AMSL12045	AMSL12045 IP44 LED 38W/840 AC 0	LED	2,9	K5	1198	1065	4610/4020/3390/2760 lm
43 611 93	AMSL12045/3K	AMSL12045/3K IP44 38W/830 AC 0	LED	2,9	K5	1198	1065	4580/4000/3370/2740 lm
43 603 26	AMSL150	AMSL150 IP44 LED 65W/840 AC 0	LED	3,5	K5	1498	1365	7600 lm
43 611 88	AMSL150/3K	AMSL150/3K IP44 65W/830 AC 0	LED	3,5	K5	1498	1365	7213 lm
43 604 88	AMSL15055	AMSL15055 IP44 LED 47W/840 AC 0	LED	3,5	K5	1498	1365	5510 lm
43 611 96	AMSL15055/3K	AMSL15055/3K IP44 47W/830 AC 0	LED	3,5	K5	1498	1365	5229 lm

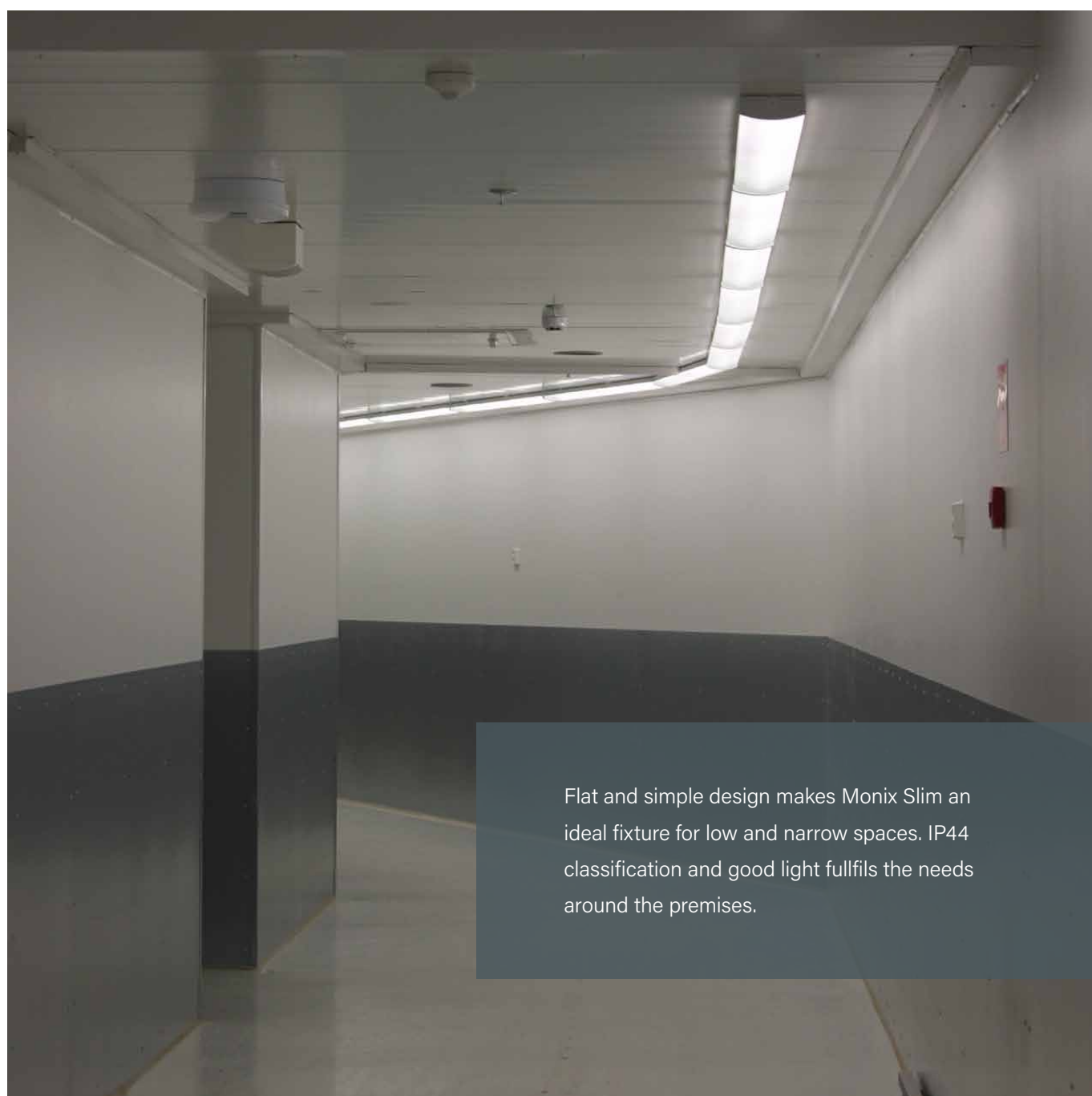
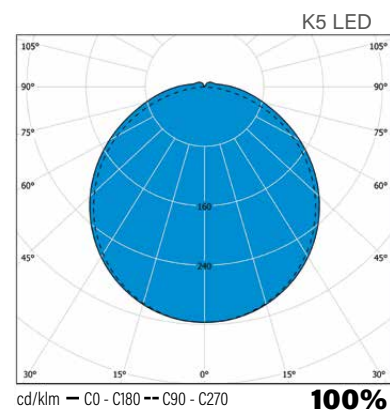
E number	Type	Product name	Base	Kg	Light distribution	A	B	Luminous flux
Monix Slim LED DALI								
43 613 09	AMSL60ED	AMSL60ED IP44 29W/840 AC 0 DALI	LED	1,7	K5	598	520	2890 lm
43 613 25	AMSL60ED/3K	AMSL60ED/3K IP44 29W/830 AC 0 DALI	LED	1,7	K5	598	520	2906 lm
43 613 21	AMSL6020ED	AMSL6020ED IP44 21W/840 AC 0 DALI	LED	1,7	K5	598	520	2170 lm
43 613 29	AMSL6020ED/3K	AMSL6020ED/3K IP44 21W/830 AC 0 DALI	LED	1,7	K5	598	520	2067 lm
43 613 14	AMSL90ED	AMSL90ED IP44 47W/840 AC 0 DALI	LED	2,9	K5	898	765	4480 lm
43 613 26	AMSL90ED/3K	AMSL90ED/3K IP44 47W/830 AC 0 DALI	LED	2,9	K5	898	765	4268 lm
43 613 22	AMSL9030ED	AMSL9030ED IP44 29W/840 AC 0 DALI	LED	2,3	K5	898	765	3050 lm
43 613 30	AMSL9030ED/3K	AMSL9030ED/3K IP44 29W/830 AC 0 DALI	LED	2,3	K5	898	765	2906 lm
43 613 01	AMSL120ED	AMSL120ED IP44 54W/840 AC 0 DALI	LED	2,9	K5	1198	1065	6200 lm
43 613 23	AMSL120ED/3K	AMSL120ED/3K IP44 54W/830 AC 0 DALI	LED	2,9	K5	1198	1065	5907 lm
43 613 15	AMSL12045ED	AMSL12045ED IP44 38W/840 AC 0 DALI	LED	2,9	K5	1198	1065	4470 lm
43 613 27	AMSL12045ED/3K	AMSL12045ED/3K IP44 38W/830 AC 0 DALI	LED	2,9	K5	1198	1065	4259 lm
43 613 08	AMSL150ED	AMSL150ED IP44 65W/840 AC 0 DALI	LED	3,5	K5	1498	1365	7600 lm
43 613 24	AMSL150ED/3K	AMSL150ED/3K IP44 65W/830 AC 0 DALI	LED	3,5	K5	1498	1365	7213 lm
43 613 20	AMSL15055ED	AMSL15055ED IP44 47W/840 AC 0 DALI	LED	3,5	K5	1498	1365	5510 lm
43 613 28	AMSL15055ED/3K	AMSL15055ED/3K IP44 47W/830 AC 0 DALI	LED	3,5	K5	1498	1365	5229 lm
Monix Slim LED with radar								
43 605 14	AMSLR60	AMSLR60 IP44 LED 30W/840 AC 0 RAD	LED	1,7	K5	598	520	3130/2710/2590/2150 lm
43 605 15	AMSLR6020	AMSLR6020 IP44 LED 22W/840 AC 0 RAD	LED	1,7	K5	598	520	2250/1970/1680/1370 lm
43 603 40	AMSLR90	AMSLR90 IP44 LED 43W/840 AC 0 RAD	LED	2,3	K5	898	765	4940/4300/4110/3410 lm
43 605 20	AMSLR9030	AMSLR9030 IP44 LED 30W/840 AC 0 RAD	LED	2,3	K5	898	765	4910/4270/4090/3390 lm
43 603 34	AMSLR120	AMSLR120 IP44 LED 55W/840 AC 0 RAD	LED	2,9	K5	1198	1065	6440/5590/5350/4410 lm
43 605 11	AMSLR12045	AMSLR12045 IP44 LED 39W/840 AC 0 RAD	LED	2,9	K5	1198	1065	4610/4020/3390/2760 lm
43 603 38	AMSLR150	AMSLR150 IP44 LED 66W/840 AC 0 RAD	LED	3,5	K5	1498	1365	7600 lm
43 605 12	AMSLR15055	AMSLR15055 IP44 LED 48W/840 AC 0 RAD	LED	3,5	K5	1498	1365	5510 lm
Monix Slim LED – luminaires for datacenters and other high ambient temperature applications (Ta max +45 °C)								
43 167 61	AMSL9025	AMSL9025 IP44 LED 19W/840	LED	2,2	K5	898	765	2650 lm
43 167 64	AMSL9025ED	AMSL9025ED IP44 LED 19W/840 DALI	LED	2,2	K5	898	765	2650 lm
43 167 69	AMSL12036	AMSL12036 IP44 LED 25W/840	LED	2,6	K5	1198	1065	3670 lm
43 167 62	AMSL12036ED	AMSL12036ED IP44 LED 25W/840 DALI	LED	2,6	K5	1198	1065	3670 lm
43 167 70	AMSL15045	AMSL15045 IP44 LED 31W/840	LED	3,4	K5	1498	1365	4500 lm
43 167 63	AMSL15045ED	AMSL15045ED IP44 LED 31W/840 DALI	LED	3,4	K5	1498	1365	4500 lm
Mounting accessories								
43 641 85	AMJK2S	AMJK2S SPRING BRACKET PAIR				steel		
43 600 38	AMJK2SV	AMJK2SV SPRING BRACKET PAIR WH				white		
43 614 42	SKYDAMSL	Ceiling bracket SKYDAMSL SHELTER BRACKET PAIR				white		



SKYDAMSL

Luminaire per miniature circuit breaker	B10	B16	C10	C16
AMSL60 (also /3K and radar)	24	40	24	40
AMSL6020 (also /3K and radar)	37	59	37	59
AMSL90 (also /3K and radar)	24	40	24	40
AMSL9025	37	59	37	59
AMSL9030 (also /3K and radar)	37	59	37	59
AMSL120 (also /3K and radar)	24	40	24	40
AMSL12036	37	59	37	59
AMSL12045 (also /3K and radar)	37	59	37	59
AMSL150 (also /3K and radar)	15	24	24	40
AMSL15045	15	24	24	40
AMSL15055 (also /3K and radar)	15	24	24	40

Luminaire per miniature circuit breaker	B10	B16	C10	C16
AMSL60ED (also /3K)	22	36	37	61
AMSL6020ED (also /3K)	22	36	37	61
AMSL90ED (also /3K)	15	24	24	40
AMSL9025ED	15	24	24	40
AMSL9030ED (also /3K)	15	24	24	40
AMSL120ED (also /3K)	15	24	24	40
AMSL12036ED	15	24	24	40
AMSL12045ED (also /3K)	15	24	24	40
AMSL150ED (also /3K)	15	24	24	40
AMSL15045ED	15	24	24	40
AMSL15055ED (also /3K)	15	24	24	40



Flat and simple design makes Monix Slim an ideal fixture for low and narrow spaces. IP44 classification and good light fullfils the needs around the premises.