


1 1250000	<b>DATA SHEET</b>	
Valid from: 14.10.2025	<b>EPIC® H-D 7 SCG / H-D 7 BCG stamped</b>	

## Description

- H-D inserts for stamped and machined crimp contacts
- Small, high-performance connector
- High performance crimping contacts
- PE contact with screw connection



## General Characteristics

Series	H-D 7
Version	Male (Article 11250000) /Female (Article 11251000)
Number of Contacts	7 + PE
Termination Methods	Crimp termination: 0.14 - 2.5 mm <sup>2</sup>
Temperature Range	-40°C to +100°C, short-term up to +125°C

## Mechanical Characteristics

Cycle of mechanical operation	100
-------------------------------	-----

## Electrical Characteristics

Rated Voltage, IEC	24 V (AC)/60 V (DC) metal housing 250 V thermoplastic housing
Rated Voltage, UL	250 V
Rated Impulse Voltage	2.5 kV
Rated Current, IEC	10 A
Rated Current, UL	10 A
Contact Resistance	< 2 mOhm
Degree of Soiling	3

## Materials and Surfaces

Contacts	Copper alloy, hard silver/gold-plated
Insulating Body	PBT
Flammability Class according to UL 94	V0


## Approvals

UL-Approval, E-File-Number	E75770
VDE-Approval, VDE-REG.-Nr.	B437

## Standard

Safety Standard	IEC 61984, UL 1977
-----------------	--------------------

Creator: TODV1/BU EPIC Released: FICE1/BU EPIC	Document: DB11250000EN Version: 03	Page 1 of 2
---	---------------------------------------	-------------

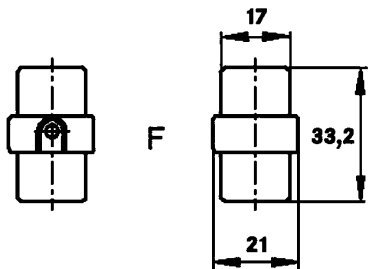
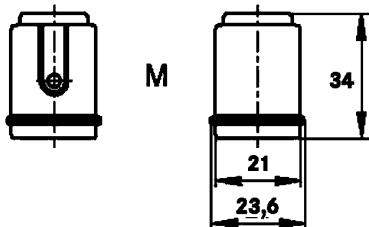
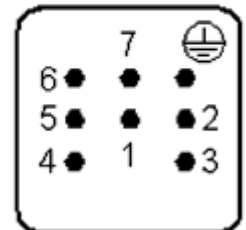
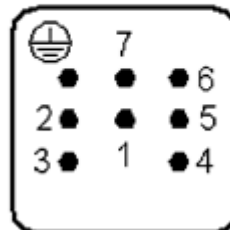
11250000	<b>DATA SHEET</b>	
Valid from: 14.10.2025	<b>EPIC® H-D 7 SCG / H-D 7 BCG stamped</b>	

### Technical Drawings



**M**

**F**



Industrial machinery and plant engineering

#### Info

Compact, powerful standard insert  
Space saving, crimping contact

#### Application range

Machine and equipment manufacturing  
Control engineering

#### Remark

Photographs are not to scale and do not represent detailed images of the respective products.

Creator: TODV1/BU EPIC Released: FICE1/BU EPIC	Document: DB11250000EN Version: 03	Page 2 of 2
---	---------------------------------------	-------------