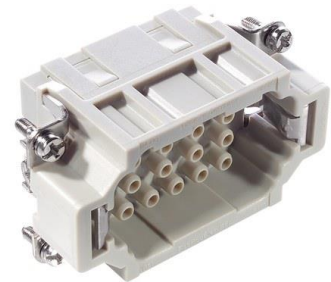


10182400	<b>DATA SHEET</b>	
Valid from: 03.07.2024	<b>EPIC® H-EE 18 SC / H-EE 18 BC</b>	

## Description

- H-EE inserts with high contact density based on the proven H-BE series.
- The H-EE inserts with machined contacts for a high number of pins in very tight spaces.
- For assembly in H-B housing



## General Characteristics

Series	H-EE 18 machined
Version	Male (Article 10182400)/Female (Article 10183400)
Number of Contacts	18 + PE
Termination Methods	Crimp termination: 0.5 – 4.0 mm <sup>2</sup>
Temperature Range	-40°C to +100°C, short-term up to +125°C

## Mechanical Characteristics

Cycle of mechanical operation	100
-------------------------------	-----

## Electrical Characteristics

Rated Voltage, IEC	500 V
Rated Voltage, UL	600 V
Rated Voltage, CSA	600 V
Rated Impulse Voltage	6 kV
Rated Current, IEC	16 A
Rated Current, UL	16 A
Rated Current, CSA	16 A
Contact Resistance	< 2 mOhm
Degree of Soiling	3

## Materials and Surfaces

Contacts	Copper alloy, hard silver/gold-plated
Insulating Body	PC
Flammability Class according to UL 94	V0


## Approvals

UL-Approval, E-File-Number	E75770
----------------------------	--------

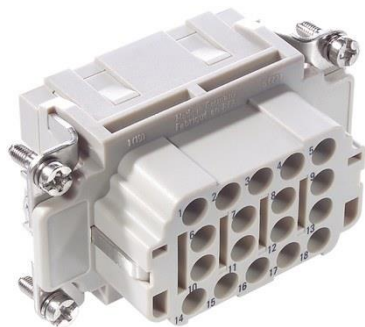
## Standard

Safety Standard	IEC 61984, UL 1977
-----------------	--------------------

Creator: MANA2/PDP Released: IVSE1/PDP	Document: DB10182400EN Version: 03	Page 1 of 2
---	---------------------------------------	-------------

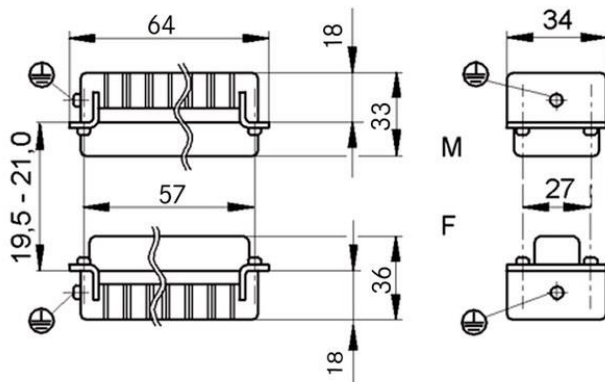
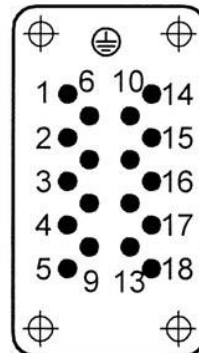
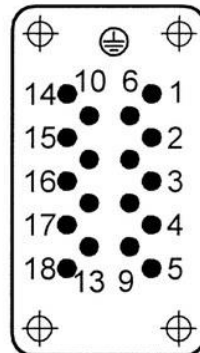
10182400	<b>DATA SHEET</b>	
Valid from: 03.07.2024	<b>EPIC® H-EE 18 SC / H-EE 18 BC</b>	

### Technical Drawings



**M**

**F**



Industrial machinery and plant engineering



Temperature-resistant

### Info

Inserts with high contact density for medium power

### Application range

Mechanical engineering  
Plant engineering

### Remark

Photographs are not to scale and do not represent detailed images of the respective products.

Creator: MANA2/PDP Released: IVSE1/PDP	Document: DB10182400EN Version: 03	Page 2 of 2
---	---------------------------------------	-------------