
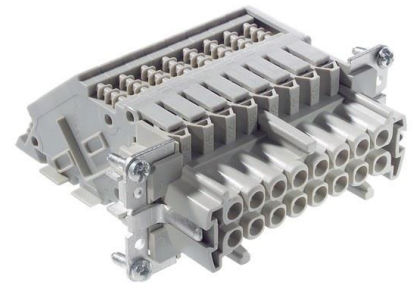


70315100	<b>DATA SHEET</b>	
Valid from: 03.07.2024	<b>EPIC® TB-H-BE 16</b>	

## Description

- For convenient, clear wiring in control cabinets. Assembly in panel-mount base housings.
- Standard H-BE inserts for use with switch cabinets
- Pluggable with H-BE male inserts in hoods
- Fastening on side = "left" means that when mounting the terminal adapter on the left wall of a control cabinet, the PE connection and pin "1" are on the "top" side



## General Characteristics

Series	TH-H-BE
Version	Female BRE right Female BLI left (Article 70314100)
Number of Contacts	16 + PE
Termination Methods	Screw termination: 0.5 - 4 mm <sup>2</sup>
Temperature Range	-40°C to +100°C, short-term up to +125°C

## Mechanical Characteristics

Cycle of mechanical operation	200
-------------------------------	-----

## Electrical Characteristics

Rated Voltage, IEC	500 V
Rated Voltage, UL	600 V
Rated Voltage, CSA	600 V
Rated Impulse Voltage	6 kV
Rated Current, IEC	16 A
Rated Current, UL	16 A
Rated Current, CSA	16 A
Contact Resistance	< 2 mOhm
Degree of Soiling	3

## Materials and Surfaces

Contacts	Copper alloy, hard silver -plated
Insulating Body	PC
Flammability Class according to UL 94	V0


## Approvals

UL-Approval, E-File-Number	E75770
----------------------------	--------

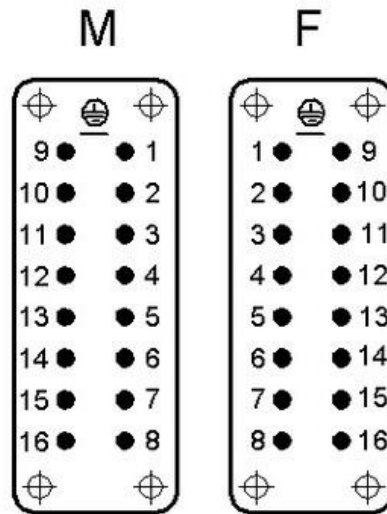
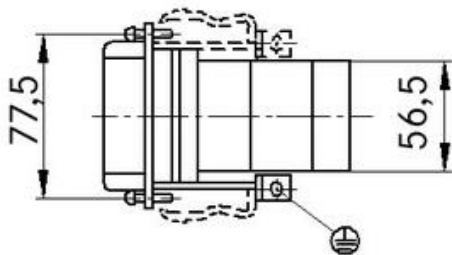
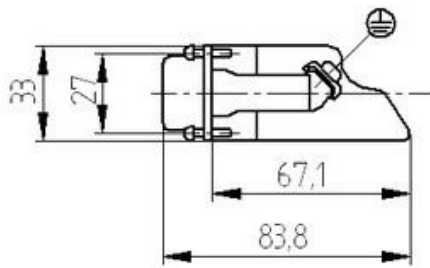
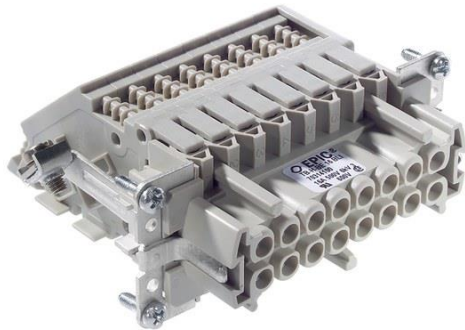
## Standard

Safety Standard	IEC 61984, UL 1977
-----------------	--------------------

Creator: MANA2/PDP Released: IVSE1/PDP	Document: DB70315100EN Version: 02	Page 1 of 2
---	---------------------------------------	-------------

70315100	<b>DATA SHEET</b>	
Valid from: 03.07.2024	EPIC® TB-H-BE 16	

### Technical Drawing



### Info

Plug connection for control cabinets

### Application range

Control cabinet manufacturing  
Plant engineering

### Remark

Photographs are not to scale and do not represent detailed images of the respective products.

Creator: MANA2/PDP Released: IVSE1/PDP	Document: DB70315100EN Version: 02	Page 2 of 2
---	---------------------------------------	-------------