

44424030	<b>DATA SHEET</b>
Valid from: 12.06.2024	<b>POWER MODULE MCS-HHC1 / MCB-HHC1</b>

## Description

- The mixed assembly guarantees high flexibility. For applications in mechanical and plant engineering, for printing machines and slide-in technology.
- Very high current transfer
- Crimp connection for permanent vibration proof contact



## General Characteristics

Series	POWER Modul
Number of Contacts	1
Termination Methods	Crimp termination: 50.0 – 95.0 mm <sup>2</sup>
Temperature Range	-40°C to +125°C

Artikel No.	Module	VPE
44424030*	Male	1
44424031*	Female	1

## Mechanical Characteristics

Cycles of mechanical operation	500
--------------------------------	-----

## Electrical Characteristics

Rated Voltage	1000 V
Rated impulse voltage, UL/CSA	600 V
Rated impulse voltage	8 kV
Rated Current	320 A
Pollution Degree	3

## Materials and Surfaces

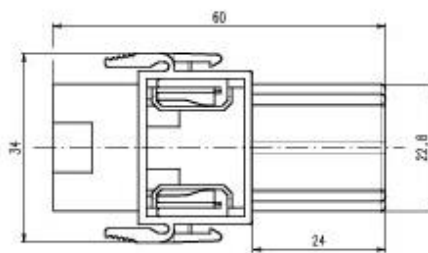
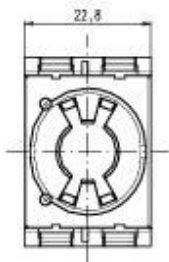
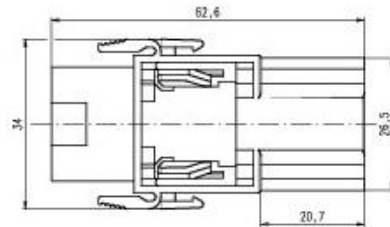
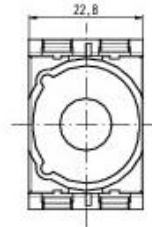
Module	PA6
Flammability Class according to UL 94	V0

## Approvals

UL-File-Number	E75770
----------------	--------



44424030

**DATA SHEET**Valid from:  
12.06.2024**POWER MODULE MCS-HHC1 / MCB-HHC1****Technical Drawing**

Automation



Industrial machinery and plant engineering



Wind Energy

**Info**

Extremely high current for sufficient power reserves  
Versatile functions in one connector

**Application range**

Robotics industry  
Renewable energy  
Plant engineering  
Mechanical engineering

**Remark**

Due to reduced cross sections at PE contacts of frames, the PE contact has to be additionally protected against short circuits by using a protection circuit offering a sufficiently short breaking time (<0.25s).

Photographs are not to scale and do not represent detailed images of the respective products.

\* Trade product, no Lapp product