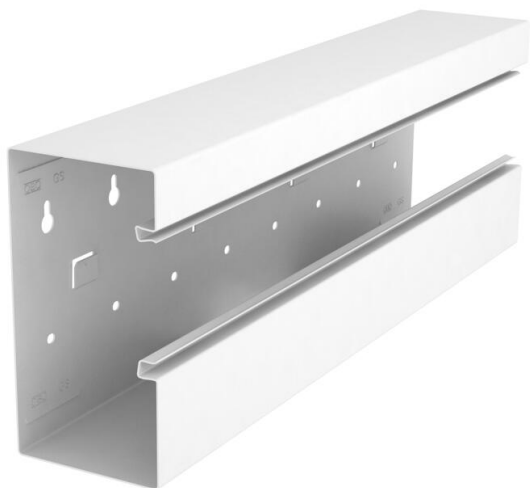


Technical data sheet

T piece, asymmetrical, for device installation trunking Rapid 80 type GS-A90170
Item number: 6277960



T piece suitable for direct wall mounting.



St Steel

Master data

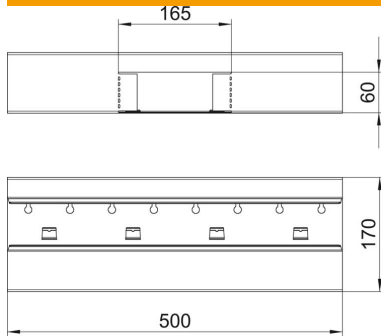
Item number	6277960
Type	GS-AT90170RW
Description 1	T piece
Description 2	asymmetrical
Manufacturer	OBO
Dimension	90x170x500
Colour	Pure white; RAL 9010
Material	Steel
Smallest sales unit	1
Unit of quantity	Piece
Weight	186 kg
Weight unit	kg/100 pc.
CO2 Footprint (GWP) Cradle-to-Gate	4,7516 kg CO2e / 1 Piece

Technical data sheet

T piece, asymmetrical, for device installation trunking Rapid 80 type GS-A90170
Item number: 6277960



Dimensions



Length	500 mm
Width	170 mm
Height	90 mm

Technical data

Number of covers	1
Version for	Base
for duct width	170 mm
for trunking height	90 mm
Halogen-free	yes
Cable retaining clip	no
Duct connector	no
Cover mounting type	Internal
Mounting perforation in base	yes
Cover width	76.5 mm
Protection rating	IP30
Protective film	yes
Protection rating IK code	IK10
Symmetrical	no
Permitted temperature range, max.	60 °C
Permitted temperature range, min.	-25 °C