

# Technical data sheet

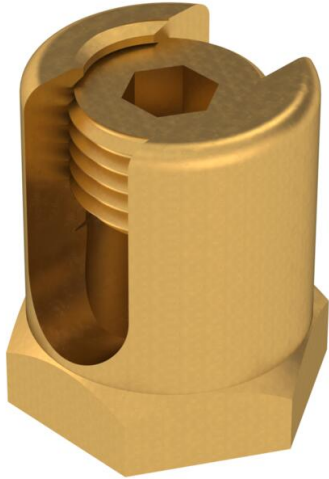
## Earthing terminal with fastening thread

Item number: 6404016



Earthing terminal for fastening the equipotential bonding conductor to the cable support system. M14 threaded pin, Allen drive with 6 mm across flats.

Suitable for conductor cross sections of 25–75 mm<sup>2</sup>.



 Brass

### Master data

Item number	6404016
Type	EKL 35 M6 ISK
Description 1	Earthing terminal
Description 2	with fastening thread M6
Manufacturer	OBO
Dimension	25-75mm <sup>2</sup>
Colour	Brass
Material	Brass
Smallest sales unit	50
Unit of quantity	Piece
Weight	4.6 kg
Weight unit	kg/100 pc.
CO <sub>2</sub> Footprint (GWP) Cradle-to-Gate	0,1191 kg CO <sub>2</sub> e / 1 Piece

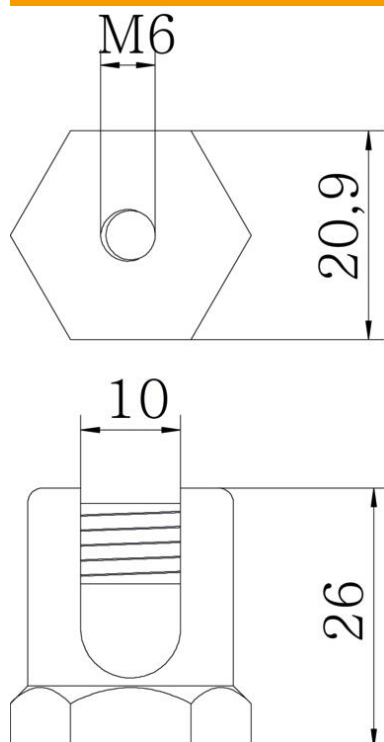
# Technical data sheet

## Earthing terminal with fastening thread

Item number: 6404016



### Dimensions



Dimension L	26 mm
Dimension I	10 mm

### Technical data

Maintain electrical functions	no
Suitable for mesh cable tray	no
Suitable for cable ladder	yes
Suitable for cable tray	yes
Thread	M6
With screw accessories	no
Cross-section	75 mm <sup>2</sup>
Rustproof steel, pickled	no
WAF	21
Connection type	With pin/drill hole