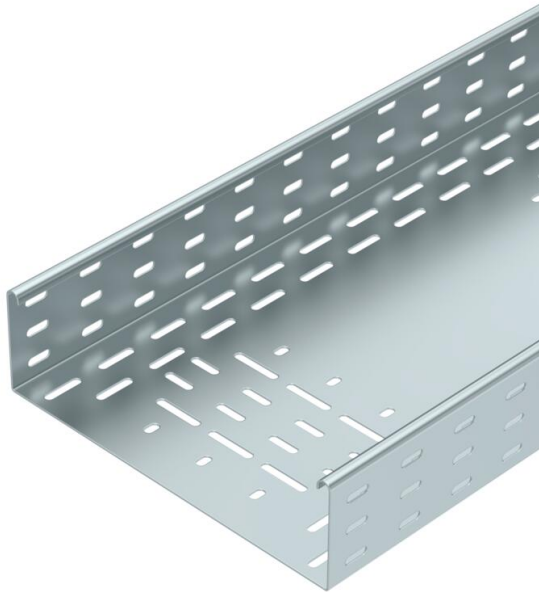


Technical data sheet

Cable tray for conveyor technology 60 FS

Item number: 6061855



Perforated cable tray for the routing of cables, especially suited for material handling technology in the automotive industry. Can be used in indoor areas. Screw connection. Suitable for direct and elevated floor mounting.



- St** Steel
- FS** Strip galvanized

Master data

Item number	6061855
Type	BKRS F 830 FS
Description 1	Cable Tray
Description 2	for conveyor technology
Manufacturer	OBO
Dimension	85x300x3000
Colour	zinc
Material	Steel
Surface	Strip galvanized
Surface standard	DIN EN 10346
Smallest sales unit	3
Unit of quantity	Metre
Weight	530.833 kg
Weight unit	kg/100 m
CO2 Footprint (GWP) Cradle-to-Gate	13,0395 kg CO2e / 1 Meter

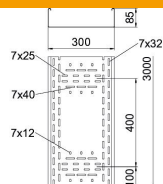
Technical data sheet

Cable tray for conveyor technology 60 FS

Item number: 6061855



Dimensions



Dimension	85x300
Length	3,000 mm
Width	300 mm
Height	85 mm
Plate thickness	1.5 mm
Dimension B	300 mm
Dimension H	85 mm

Technical data

Connector version	Without connectors
Maintain electrical functions	no
With cover	no
Mounting perforation in base	yes
NATO hole pattern	no
Usable cross-section	253 cm ²
Usable cross-section	25300 mm ²
Rustproof steel, pickled	no
Side perforation	no
Wide-span version	no
Usable length	3000 mm
Type of connector, cable support system	Screwed