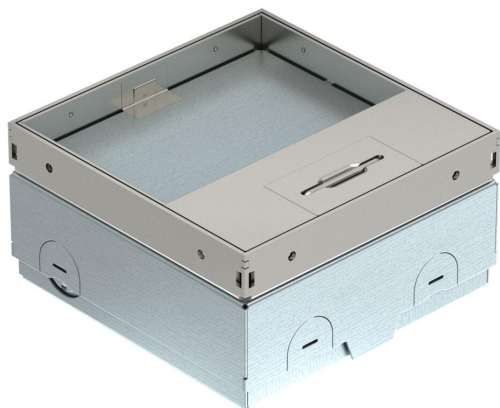


# Technical data sheet

UDHOME-ONE floor socket, with floor covering recess, single protective contact socket, stainless steel

Item number: 7368290



Square floor socket for use in dry-care systems and screed floors in indoor areas. Installation housing with pre-marked insertion openings for pipes (M20/M25). Cover adjustable to top edge of floor covering using four height-adjustment supports. The minimum installation depth is 75 mm, the height-adjustment range +30 mm. Frame and cover made of stainless steel and visible in the floor covering. Cover with floor covering recess. A protective contact socket is included in the delivery. A data socket can optionally be installed in the data technology plate. When delivered, the item is closed with a blanking plate.



A2 Stainless steel

## Master data

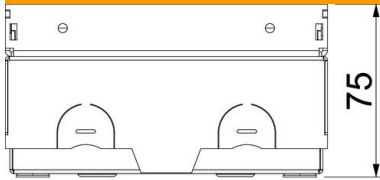
Item number	7368290
Type	UDHOME-ONE GV15V
Description 1	Floor socket
Description 2	with protective contact socket
Manufacturer	OBO
Dimension	140x140x75
Material	Stainless steel
Smallest sales unit	1
Unit of quantity	Piece
Weight	220 kg
Weight unit	kg/100 pc.
CO2 Footprint (GWP) Cradle-to-Gate	11,7005 kg CO2e / 1 Piece

# Technical data sheet

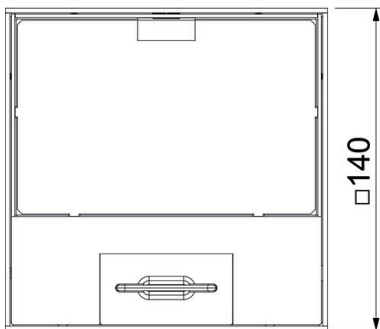
UDHOME-ONE floor socket, with floor covering recess, single protective contact socket, stainless steel  
Item number: 7368290



## Dimensions



Length	140 mm
Width	140 mm
Height	75 mm



## Technical data

Number of installable devices	2
Number of SCHUKO sockets	1
Version for	Square
Cable outlet version	Swivellable cord outlet
Equipment	Single VDE socket
Floor covering protection frame	no
Floor care	Dry
Cover version	Floor covering recess
Seal installation option	no
Application when used	6.101.1 Dry floor care
Application when unused	6.101.1 Dry floor care
Floor height, max.	105 mm
Floor height, min.	75 mm
Suitable for raised floor installation	yes
Suitable for screed-flush closed underfloor ducts	no
Suitable for screed-covered underfloor ducts	no
Suitable for cavity floor installation	yes
Suitable for wet care	no
Suitable for underfloor ducts	no
Device support to accept mounting boxes	no
With floor covering recess	yes
Height-adjustment range, max.	105 mm
Height-adjustment range, min.	75 mm
Protection rating (IP) when used	IP20

# Technical data sheet

UDHOME-ONE floor socket, with floor covering recess, single protective contact socket, stainless steel

Item number: 7368290



## Technical data

Protection rating (IP) when unused	IP40
Protection rating IK code	IK10
Heavy-duty version	no
Vertical load, large area	to 15,000 N
Vertical load, small area	to 3,000 N
Approvals	VDE
Opening mechanism	Handle
Floor covering thickness	15 mm