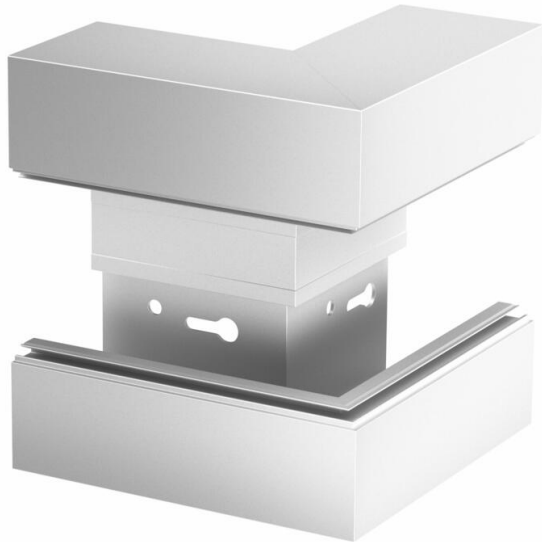


Technical data sheet

External corner BRA AE 70170

Item number: 6133273



External corner as a fitting for changing the direction of the Signa Style device installation trunking.
Cut-concealing.



- Alu** Aluminium
- EL** Anodised

Master data

Item number	6133273
Type	BRA AE70170 EL
Description 1	External corner
Description 2	SIGNA STYLE 70x170 anodised
Manufacturer	OBO
Dimension	70x170x155
Colour	aluminium
Material	Aluminium
Surface	Anodised
Surface standard	
Smallest sales unit	1
Unit of quantity	Piece
Weight	67.1 kg
Weight unit	kg/100 pc.
CO2 Footprint (GWP) Cradle-to-Gate	15,7167 kg CO2e / 1 Piece

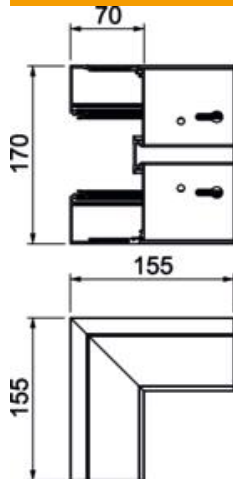
Technical data sheet

External corner BRA AE 70170



Item number: 6133273

Dimensions



Length	155 mm
Width	170 mm
Height	70 mm

Technical data

Number of covers	1
Version for	Base
for duct width	170 mm
for trunking height	70 mm
Halogen-free	yes
Cable retaining clip	no
Duct connector	no
Cover mounting type	Internal
Mounting perforation in base	yes
Cover width	79 mm
Protection rating	IP30
Protective film	yes
Protection rating IK code	IK07.
Symmetrical	no
Permitted temperature range, max.	60 °C
Permitted temperature range, min.	-5 °C
Angle range, min.	90 mm