

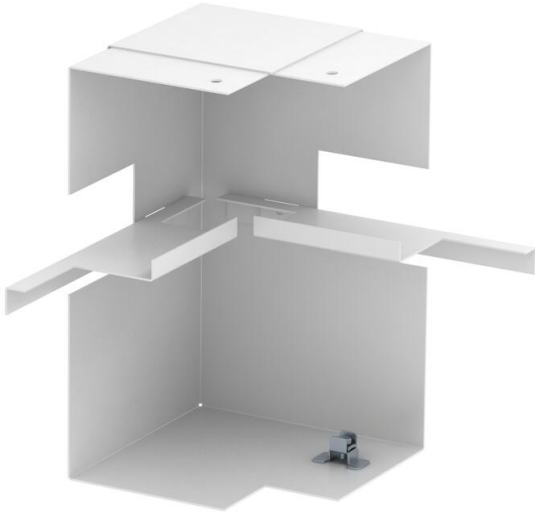
Technical data sheet

Internal corner, asymmetrical, for Rapid 80 device installation on trunking, type GS-A90210

Item number: 6278140



Internal corner for direct installation on GS device installation trunking.



St Steel

Master data

Item number	6278140
Type	GS-AI90210RW
Description 1	Internal corner
Description 2	simple, asymmetrical
Manufacturer	OBO
Dimension	90x210x148
Colour	Pure white; RAL 9010
Material	Steel
Smallest sales unit	1
Unit of quantity	Piece
Weight	95 kg
Weight unit	kg/100 pc.
CO2 Footprint (GWP) Cradle-to-Gate	3,9054 kg CO2e / 1 Piece

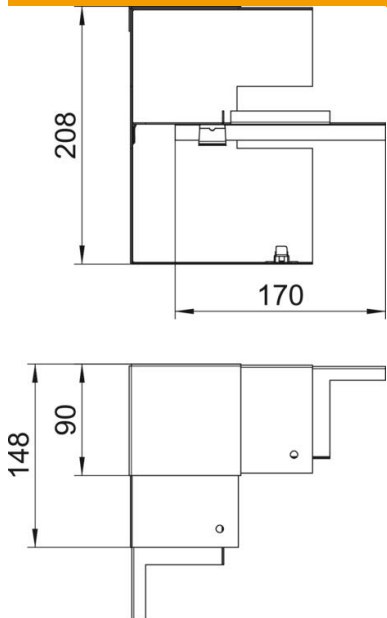
Technical data sheet

Internal corner, asymmetrical, for Rapid 80 device installation trunking, type GS-A90210

Item number: 6278140



Dimensions



Length	148 mm
Width	210 mm
Height	90 mm

Technical data

Number of covers	1
Version for	Base
Shape	Asymmetrical
for duct dimension	90 x 210 mm
for duct width	210 mm
for trunking height	90 mm
Halogen-free	yes
Cable retaining clip	no
Duct connector	no
Cover mounting type	Internal
Mounting perforation in base	yes
Cover width	76.5 mm
Protection rating	IP30
Protective film	yes
Protection rating IK code	IK10
Permitted temperature range, max.	60 °C
Permitted temperature range, min.	-25 °C
Angle range, min.	90 mm