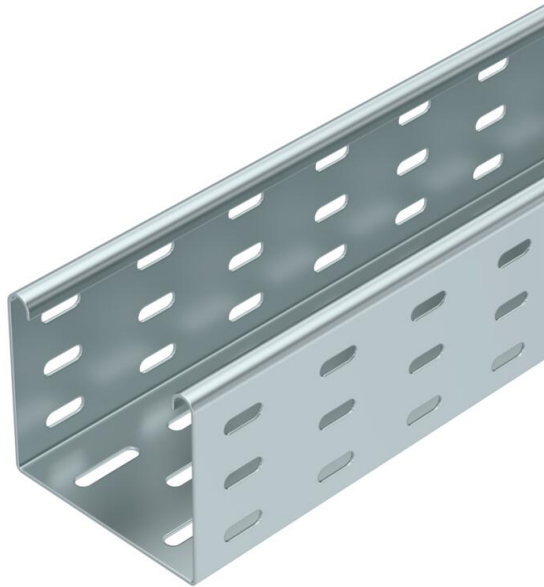


# Technical data sheet

## Cable tray for conveyor technology 60 FS

Item number: 6061851



Perforated cable tray for the routing of cables, especially suited for material handling technology in the automotive industry. Can be used in indoor areas. Screw connection. Suitable for direct and elevated floor mounting.

CE

- St** Steel
- FS** Strip galvanized

### Master data

Item number	6061851
Type	BKRS F 810 FS
Description 1	Cable Tray
Description 2	for conveyor technology
Manufacturer	OBO
Dimension	85x100x3000
Colour	zinc
Material	Steel
Surface	Strip galvanized
Surface standard	DIN EN 10346
Smallest sales unit	3
Unit of quantity	Metre
Weight	310.867 kg
Weight unit	kg/100 m
CO2 Footprint (GWP) Cradle-to-Gate	7,7711 kg CO2e / 1 Meter

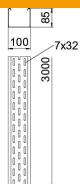
# Technical data sheet

## Cable tray for conveyor technology 60 FS

Item number: 6061851



### Dimensions



Dimension	85x100
Length	3,000 mm
Width	100 mm
Height	85 mm
Plate thickness	1.5 mm
Dimension B	100 mm
Dimension H	85 mm

### Technical data

Connector version	Without connectors
Maintain electrical functions	no
With cover	no
Mounting perforation in base	yes
NATO hole pattern	no
Usable cross-section	83 cm <sup>2</sup>
Usable cross-section	8300 mm <sup>2</sup>
Rustproof steel, pickled	no
Side perforation	no
Wide-span version	no
Usable length	3000 mm
Type of connector, cable support system	Screwed