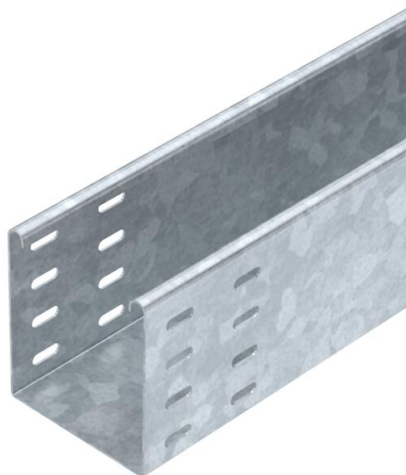


# Technical data sheet

## Cable tray SKSU 110 FT

Item number: 6064810



SKS 110 = heavy-duty cable tray system with 110 mm side height. With connector perforation on both cable tray ends. Straight connection with straight connector RLVA 110 FT. Please order connectors separately.  
Magnetic shield insulation without cover 20 dB, with cover 50 dB.



- St** Steel
- FT** Hot-dip galvanised

### Master data

Item number	6064810
Type	SKSU 110 FT 6
Description 1	Cable tray SKSU
Description 2	unperforated, connector holes
Manufacturer	OBO
Dimension	110x100x6000
Colour	zinc
Material	Steel
Surface	Hot-dip galvanised
Surface standard	DIN EN ISO 1461
Smallest sales unit	6
Unit of quantity	Metre
Weight	434.766 kg
Weight unit	kg/100 m
CO2 Footprint (GWP) Cradle-to-Gate	8,9432 kg CO2e / 1 Meter

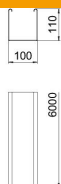
# Technical data sheet

## Cable tray SKSU 110 FT

Item number: 6064810



### Dimensions



Length	6,000 mm
Width	100 mm
Height	110 mm
Plate thickness	0.06 in
Plate thickness	1.5 mm

### Technical data

Connector version	Without connectors
Mounting system fastening type	Floor Ceiling Wall
Maintain electrical functions	no
Mounting perforation in base	no
NATO hole pattern	no
Usable cross-section	108 cm <sup>2</sup>
Usable cross-section	10800 mm <sup>2</sup>
Rustproof steel, pickled	no
Side perforation	no
Wide-span version	yes

# Technical data sheet

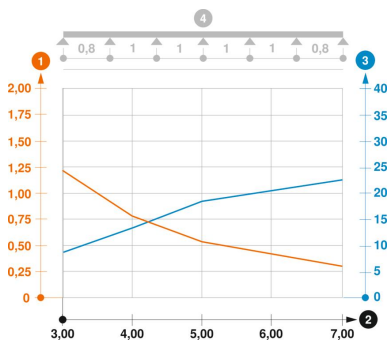
## Cable tray SKSU 110 FT

Item number: 6064810



### Loads

Insertable support spacings, min.	1.5 m
Insertable support spacings, max.	4 m
Support spacing 1.5 m	3 kN/m
Support spacing 2.0 m	2.4 kN/m
Support spacing 2.5 m	1.76 kN/m
Support spacing 3.0 m	1.2 kN/m
Support spacing 3.5 m	0.84 kN/m
Support spacing 4.0 m	0.8 kN/m
Support spacing 5.0 m	0.55 kN/m
Support spacing 6.0 m	0.4 kN/m
Support spacing 7.0 m	0.3 kN/m



### Load diagram cable tray, type SKSU 110 with connector, type RLVA

- 1 Permitted cable tray/ladder load in kN/m without man load
- 2 Support width in mm
- 3 Rail bend in mm at permitted kN/m
- 4 Load scheme during testing
- Load curve with cable tray/ladder width in mm
- Strut bend curve according to support width