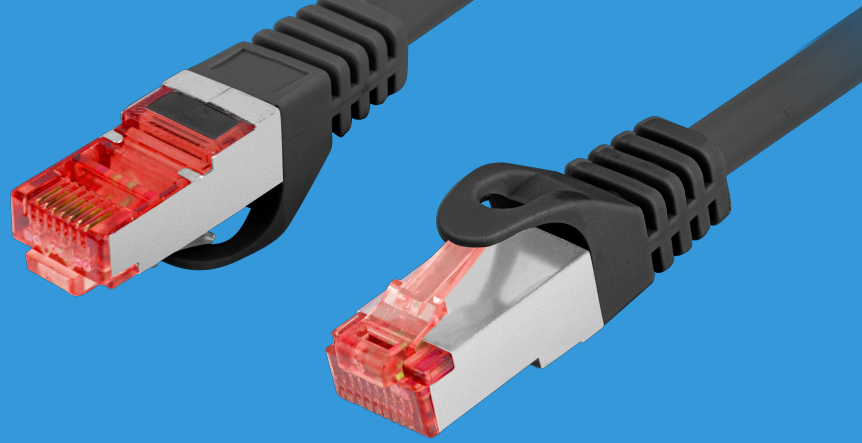


PCF6-10CU-0150-BK

# PATCH CABLE CAT.6



## PRODUCT FEATURES:

- S/FTP shielding type – Aluminium braid on wire and each pair foiled additionally
- The coating is made of low-smoke and Halogen-free materials (LSZH)
- Category compliance confirmed by Fluke tester
- Stranded wires made from pure copper

## PRODUCT SPECIFICATION:

|                             |               |
|-----------------------------|---------------|
| ICT category                | Cat. 6        |
| Shielding type              | S/FTP         |
| Cable length                | 150 cm        |
| Conductor material          | Copper (CU)   |
| Coating material            | LSZH          |
| AWG                         | 27            |
| Conductor thickness         | 7 x 0.16 mm   |
| Outer diameter              | 5,7 mm        |
| Maximum operating frequency | up to 250 MHz |
| Colour                      | Black         |

