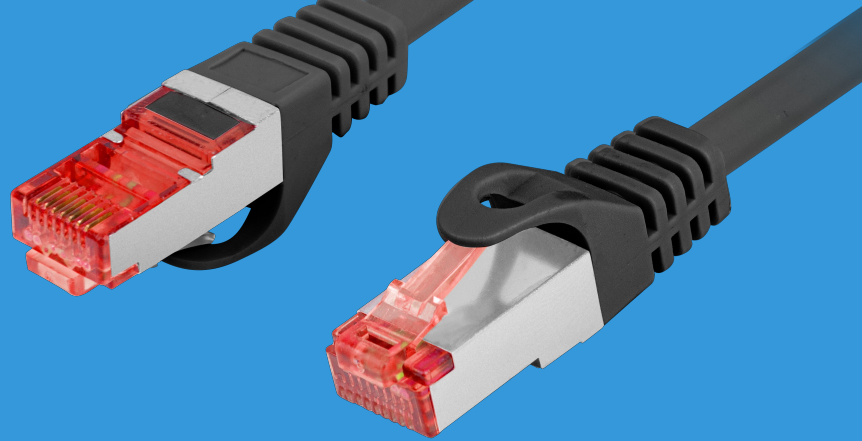


PCF6-10CU-1500-BK

PATCH CABLE CAT.6



PRODUCT FEATURES:

- S/FTP shielding type – Aluminium braid on wire and each pair foiled additionally
- The coating is made of low-smoke and Halogen-free materials (LSZH)
- Category compliance confirmed by Fluke tester
- Stranded wires made from pure copper

PRODUCT SPECIFICATION:

ICT category	Cat. 6
Shielding type	S/FTP
Cable length	1 500 cm
Conductor material	Copper (CU)
Coating material	LSZH
AWG	27
Conductor thickness	7 x 0.16 mm
Outer diameter	5,7 mm
Maximum operating frequency	up to 250 MHz
Colour	Black

